

**Our office is closed on Monday April 29th & Tuesday April 30th for Passover**



Home > Products > ProX Truss > Couplers, Spacers, and Hardware > Spacers > 0.34ft (0.105m) F34 Segment

SKU: XT-SQ034

Permalink: <http://www.proxdir.com>

[Search on Google](#)

## 0.34ft (0.105m) F34 Segment

[Find A Dealer](#)

### Product Images



[Download Product Images](#)

### Our Products And You

Submit your  
story

### ProX XT-SQ034 0.34ft (0.105m) Square Truss Segment

#### Description

**ProX XT-SQ034 Truss Segment** is one of the most trusted staging support systems in the live entertainment industry and is engineered and manufactured to the highest standards of safety and performance. We manufacture with [EN-AWT6 6082 Aluminum](#) for safety and strength. Our XT series F34 square truss utilizes a popular conical connector system, which easily mates with most other brands of the truss of the same size and connector type, and is available in a variety of lengths to suit your designs. Our outstanding quality control and manufacturing techniques assure excellent fitment at every connection to expedite your setups.

ProX XT-SQ series trussing is a rugged and durable trussing solution perfect for live outdoor or indoor productions, exhibitions, retail displays as well as nightclubs, and other permanent installations. ProX offers a wide variety of corners, base plates, connectors, and accessories that allow limitless design configurations to suit your needs. *Always consult an engineer for complex designs!*

#### ProX XT-SQ SERIES DIMENSIONS:

- Height: 11.42in / 290mm
- Width: 11.42in / 290mm
- Weight: 21lb/9,5kg per 3.28 ft / 1 meter
- Main Tube: 2in / 50mm
- Wall Thickness: .08in / 2mm
- Braces: .75in / 20mm

**IMPORTANT:** Always know your load weight for your equipment: [XT-SQ Truss Loading Chart](#)

### Features

- **Manufactured to Exacting Specifications in our Own Factory!**
- **Actual Height: 0.34 ft (0.105 Meter) Square Truss Segment**
- **Actual Weight: 5 Lbs.**
- **Includes One Connecting Hardware Set**
- **Material: EN-AWT6 6082 Aluminum**
- **TUV Certified Aluminium Welding**





TUV is a 3rd Party Certification Body and a Nationally Recognized Testing Laboratory (NRTL). TUV provides inspections, testing, certification & training, with the ultimate objectives of reliability, safety & high quality.

ProX Truss products utilize industry standard dimensions to be compatible to connect to/ and work with many other manufacturers of F34 trussing products with conical connectors.

#### Exterior Dimensions & Weight

4.10"H x 11.75"W x 11.75"L - Weight: 5.00 lbs

#### Shipping Dimensions & Weight

Box 1 of 1: 5.00"H x 13.00"W x 13.00"L - Shipping Weight: 6.00 lbs

#### UPC

804589616221

### Our Products and You

Submit your story

### Commonly Asked Questions

+ Where can I buy one?

[submit a question](#)

### Customer Testimonials

What did you think

### Related Products



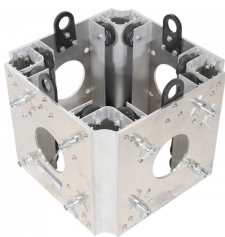
#### 0.68ft (0.210m) Square Truss Segment

SKU: XT-SQ068



#### 0.82ft 0.25m Square Truss Segment

SKU: XT-SQ082



#### Ground Support Sleeve Block for F34 Truss Segment Systems

SKU: XT-BLOCK-MK2



#### Ground Support Sleeve Block for F34 Truss Segment Systems Black Finish

SKU: XT-BLOCK-BLK

