



Home > Products > ProX Truss > Ground Support > Top Sections > 1 Meter Top Truss Section for Electric Motor or Manual Chain Hoist

SKU: XT-TOPCM1M

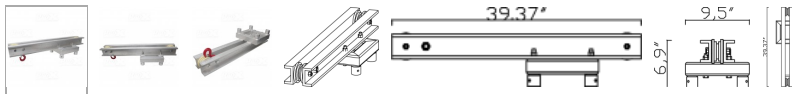
Permalink:

[Search on Google](#)

1 Meter Top Truss Section for Electric Motor or Manual Chain Hoist

[Find A Dealer](#)

Product Images



[Download Product Images](#)

Our Products And You

[Submit your story](#)

ProX XT-TOPCM1M 1 Meter Top Truss Section for Electric Motor or Manual Chain Hoist

Description

The **ProX XT-TOPCM1M** Top Section with 1M Top Length that fits F34 Series 12" and is designed for Electric Motor or Manual Chain Hoist up to 2 ton.

ProX Truss has the most trusted staging support systems in the industry and is built to the highest standards of safety and performance. It's a rugged yet lightweight trussing solution perfect for mobile DJs, bands, outdoor performances, nightclubs, live mobile productions, or permanent installations.

XT-SQ SERIES DIMENSIONS:

- Height: 11.42in / 290mm
- Width: 11.42in / 290mm
- Weight: 21lb per 3.28 ft / 9,5kg per meter
- Main Tube: 2in / 50mm
- Wall Thickness: .08in / 2mm
- Braces: .75in / 20mm

Includes connecting hardware set.

ProX Truss products utilize industry-standard dimensions to be compatible to connect to/with many other manufacturers trussing.

COUPLER'S AND PINS ARE NOT INCLUDED W/ XT-TOPCM

Features

- **Manufactured in our Own Factory!**
- **Material: 10mm EN-AWT6 6061 Aluminum**
- **Extra-long (1M) top length**
- **TUV Certified Manufacturing**
- **Fits most manufacturers with F34 Conical Couplers**

TUV Is a 3rd Party Certification Body and a Nationally Recognized Testing Laboratory (NRTL). TUV provides inspections, testing, certification & training, with the ultimate objectives of reliability, safety & high quality.

Shipping Dimensions & Weight

Box 1 of 1: 10.00"H x 12.00"W x 40.00"L - Shipping Weight: 42.00 lbs

Suggested Shipping Method: Parcel

UPC

019372410508

Our Products and You

Submit your
story

Commonly Asked Questions

+ Where can I buy one?

[submit a question](#)

Customer Testimonials

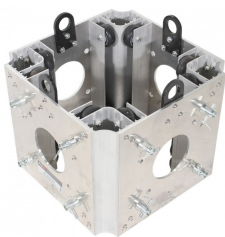
What did you think

Related Products



Pair 1 Ton Manual Chain Hoist with 30 Ft (9 M) Chain for Stage Truss roof system and line array speakers

SKU: XT-MCH1TX2-30FT



Ground Support Sleeve Block for F34 Truss Segment Systems

SKU: XT-BLOCK-MK2



Universal Vertical Tower Truss Ground Support Base on Wheels with Leveling Jacks for F34, F44 and 12" Bolt truss

SKU: XT-GSB MK3



Single 3 Ft. Outrigger Support Brace for Leveling Ground Support Truss Tower Base
SKU: XT-GSOUTS3



Conical Tube Ground Support Post towers Male to Male Hinge Joint Fits F31 F32 F34
SKU: XT-HINGE
