

Our office is closed on Monday April 29th & Tuesday April 30th for Passover

Home > Products > ProX Truss > F34 Conical Segments 2mm > Circular Arcs / Constructors > 12 Degree F34 Square Truss Angle Connector | 2mm Wall

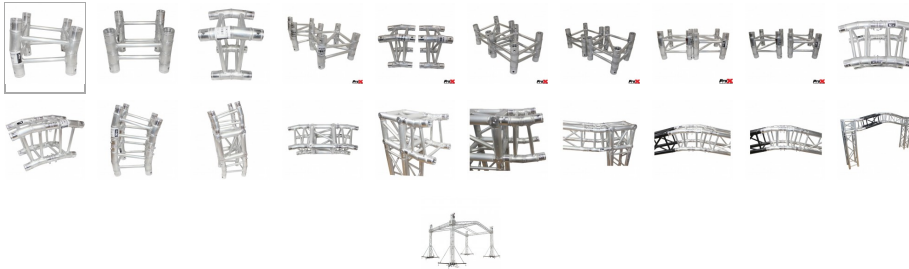
SKU: XT-SQ12D

Permalink: [Search on Google](#)

12 Degree F34 Square Truss Angle Connector | 2mm Wall

[Find A Dealer](#)

Product Images

[Download Product Images](#)

Our Products And You

[submit your story](#)

ProX XT-SQ12D 12 Degree F34 Square Truss Angle Connector | 2mm Wall

Description

The **ProX XT-SQ12D 12 Degree F34 Square Truss Angle Connector | 2mm Wall** two way, fixed angle connector can be used singularly or in multiples to create angles and decorative designs not available with normal 90-degree box units while still maintaining excellent weight loading capabilities. This is excellent for building roof structures and unique designs.

ProX Truss specializes in high-quality, general-purpose aluminum lighting and stage trussing designed for live stages, theaters, nightclubs, church installations, mobile applications, trade shows, and retail applications. Our products are built using 6082-T6 Aluminum Alloy compositions. This lightweight, corrosion-resistant aluminum has a very high tensile strength, giving you the support and stability you need. The ProX Truss Conical Coupling System allows for genderless trusses, providing a more precise line up of chords and fastening points, while the conical shape of the couplers helps to maintain overall rigidity at the stress points and makes parts harder to damage. This system also makes assembly quick and easy with very few tools needed to complete set up.

ProX F34 Truss provides high strength with exceptional quality control and excellent pricing.

- **We own the factory**, not generic trussing!
- Built to exacting specifications
- TUV Certified Welding & Processes
- Compatible with most Conical Coupled F34 trussing
- Includes tapered shear pins with clips and 4 conical couplings

Features

- **Fabricated by certified TUV welders**
- **Equipped with connecting hardware**
- **Overall width-11.42" (290mm)**
- **Outer diameter tubing-2" (50mm)**

- **Diagonal bracing-3/4" (20mm)**
- **Wall thickness-0.08" (2mm)**
- **Unit weight-8 lbs.**
- **Aluminum Alloy EN AW-6082 T6**
- **F34 Square Aluminum Truss**

TUV is a 3rd Party Certification Body and a Nationally Recognized Testing Laboratory (NRTL). TUV provides inspections, testing, certification & training, with the ultimate objectives of reliability, safety & high quality.

ProX Truss products utilize industry standard dimensions to be compatible to connect to/with many other manufacturer's F34 trussing products.

To Fit

Any trademarks, trade names or brand names appearing herein that do not belong to ProX are the property of their respective owners and/or companies, and such appearance doesn't and shall not constitute or imply endorsement, sponsorship or recommendation by ProX.

ProX Truss

(1) ProX Corner Truss • [View all products for ProX Truss ProX Corner Truss](#)

Exterior Dimensions & Weight

11.42"H x 11.42"W x 10.00"L - Weight: 8.00 lbs

Shipping Dimensions & Weight

Box 1 of 1: 12.00"H x 12.00"W x 12.00"L - Shipping Weight: 9.00 lbs

Suggested Shipping Method: Parcel

UPC

19372407652

Our Products and You

Submit your story

Commonly Asked Questions

+ Where can I buy one?

[submit a question](#)

Customer Testimonials

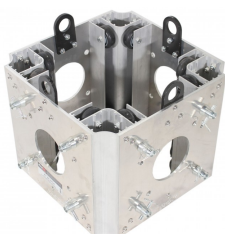
What did you think

Related Products



[7 Degree F34 Square Truss Angle Connector | 2mm Wall](#)

SKU: XT-SQ7D



[Ground Support Sleeve Block for F34 Truss Segment Systems](#)

SKU: XT-BLOCK-MK2

[6 Way Square Truss Junction Block Includes 6 Way 90° Contact Connectors](#)



6 way Square Truss Junction Block - includes 2 way & Half Conical Couplers

SKU: XT-JB6W-2W



Truss Tower Stage Roofing System Package -Top Block | Hinges | Base | Outriggers and 3.28 Ft. 2 mm Wall Truss Segment

SKU: XTP-GSBPACK3