



Home > Products > ProX Truss > BoltX™ 12" Professional Bolt Segments 3mm > BoltX™ Baseplates > 30 Inch Aluminum BoltX Base Plate, Top Plate on a 1" Raised Frame for Standard 12-16 Inch Bolted or F34 Box Truss

SKU: XT-BTBP30A

Permalink:

[Search on Google](#)

30 Inch Aluminum BoltX Base Plate, Top Plate on a 1" Raised Frame for Standard 12-16 Inch Bolted or F34 Box Truss

[Find A Dealer](#)

Product Images



[Download Product Images](#)

Our Products And You

Submit your
story

ProX XT-BTBP30A 30 Inch Aluminum BoltX Base Plate for Standard 12-16 Inch Bolted or F34 Box Truss

Description

ProX **XT-BTBP30A BoltX™** Professional Box Truss Base Plate is designed and engineered for many applications like stage lighting, concerts, Ninja Obstacle Course type construction, and similar uses. Setting ourselves apart from other box truss manufacturers BoltX™ has an innovative end plate designed and manufactured with heavy-duty aluminum material, welded on both sides, and our exclusive circular rings at each corner of the truss to reduce or eliminate damage to the main chord ends.

The **XT-BTBP30A** mates perfectly with the BoltX™ Truss sections. Our outstanding quality control and manufacturing techniques assure excellent fitment at every connection to expedite your setups. The base plate has four hand holes for easy lifting and carrying. The plate is drilled for an offset position and has a slotted X for quick center mounting.


Compatible with most other 12" Professional Box Truss Manufacturers utilizing a 6.75" bolt center pattern. Each base plate includes one set of Four 5/8" - 11 x 2.5" (NC) attachment bolts, nuts, flat & lock washers.

Features

ProX Live Performance Gear® recommends that you engage the services of a licensed engineering professional for complex loading configurations and/or conditions.

- **Mates to 12x12" / 16x16" / F34 Professional Box Truss.**
- **Also Drilled to Fit F34 Trussing (Conical Connectors Included)**
- **Industry Standard Bolt Pattern 6 3/4" x 6 3/4" with 5/8" Holes**
- **Four Convenient Hand Holes for Lifting**
- **Slotted and Drilled for Easy Mounting**
- **Load Tested & Inspected During Manufacturing and Quality Control**
- **Includes one set of Four 5/8" - 11 x 2.5" (NC) attachment bolts, nuts, flat & lock washers.**
- **Compatible with most other 12" Professional Box Truss Manufacturers**
- **Aluminum 1/2" Plate welded to 1" x 1.5" Solid Aluminum Extrusions for ultimate strength**
- **Welded to TÜV standards, 6082-T6 Alloy by GSI SLV-certified welders**
- **Finish: Natural aluminum**



 TUV is a 3rd Party Certification Body and a Nationally Recognized Testing Laboratory (NRTL). TUV provides inspections, testing, certification & training, with the ultimate objectives of reliability, safety & high quality.

ProX BoltX™ Truss products utilize industry standard dimensions to be compatible to connect to/ and work with many other manufacturers 12 In. Bolted Box trussing products.

Exterior Dimensions & Weight

1.50"H x 30.00"W x 30.00"L - Weight: 52.00 lbs

Shipping Dimensions & Weight

Box 1 of 1: 3.00"H x 31.00"W x 31.00"L - Shipping Weight: 59.00 lbs

Suggested Shipping Method: Parcel

UPC

019372412281

Our Products and You

Submit your story

Commonly Asked Questions

+ Where can I buy one?

[submit a question](#)

Customer Testimonials

What did you think

Related Products



BOLT X
PROFESSIONAL BOX TRUSS

BoltX 24 inch Steel Aluminum Base Plate, Top Plate on a 1" Raised Frame for Bolted Box Truss

SKU: XT-BTBP24A



4.92 Ft - 1.50 M F34 Square Truss Segment | 2 mm Wall

SKU: XT-SQ492



BOLT X
PROFESSIONAL BOX TRUSS

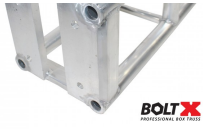
5 Ft. BoltX 12" inch Professional Box Truss Segment | 3mm Wall

SKU: XT-BT1205

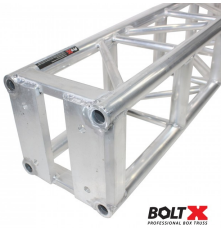


8 Ft. BoltX Bolted 12 Inch Professional Box Truss Segment | 3mm Wall

SKU: XT-BT1208



BOLT X
PROFESSIONAL BOX TRUSS



10' Ft. BoltX 12" inch Professional Box Truss Segment | 3mm Wall
SKU: XT-BT1210

BOLT X
PROFESSIONAL BOX TRUSS
