



Home > Products > ProX Truss > BoltX™ 12" Professional Bolt Segments 3mm > Straight Segments > 4' Ft. BoltX 12" inch Professional Box Truss Segment | 3mm Wall

SKU: XT-BT1204 MK2

Permalink: <http://www.proxdirect.com/4-Ft.-BoltX-12-inch-Professional-Box-Truss-Segment-3mm-Wall>

[Search on Google](#)

4' Ft. BoltX 12" inch Professional Box Truss Segment | 3mm Wall

[Find A Dealer](#)

Product Images



[Download Product Images](#)

Our Products And You

Submit your
story

XT-BT1204MK2 4' Ft. BoltX 12" inch Professional Box Truss Segment | 3mm Wall

Description

ProX **XT-BT1204 MK2** 4' Ft. BoltX 12" inch Professional Box Truss Segment | 3mm Wall. **BoltX™** Professional Box Truss is a meticulously designed and engineered structure, crafted with the utmost attention to detail and quality, to cater to a diverse range of applications. From stage lighting to concerts and Ninja Obstacle Course-type construction, this box truss is the perfect solution for professionals seeking exceptional performance.

One of the key distinguishing features of the BoltX truss is its innovative end plate design, which is constructed using heavy-duty aluminum material and welded on both sides, ensuring superior durability and strength. Additionally, the truss is equipped with exclusive circular rings at each corner, which help to reduce or eliminate damage to the main chord ends. This feature is particularly useful in scenarios where the truss is subjected to drops or dragged along concrete floors, as it significantly minimizes the risk of expensive repairs to the tubes from mishandling.

Our commitment to excellence is reflected in our quality control and manufacturing techniques, which ensure that every connection of the BoltX™ truss fits seamlessly and precisely, allowing for effortless setups. Moreover, our product is compatible with most other 12" Professional Box Truss Manufacturers utilizing a 6.75" bolt center pattern, making it a versatile and adaptable solution for professionals.

Each section of the truss includes one set of Four 5/8" - 11 x 2.5" (NC) attachment bolts, nuts, and flat & lock washers, providing users with everything they need to assemble and install the truss with ease. In conclusion, BoltX™ Professional Box Truss is a premium, high-quality product that meets the demands of professionals across various industries, making it a must-have for anyone seeking top-notch performance and durability.

Important Note: Bolts must face the same direction in a truss span, and truss uprights should have bolts on top, and nuts on the bottom. Use a ratchet to tighten bolts from the nut side and turn a few cranks past firm. Regularly inspect bolts and use washers on both sides of a connection. Replace bolt sets periodically. Over-tightening can damage or break bolts. Safety is crucial. Before raising a bolted box truss, inspect all connections and rigging.

Important: Always know your load weight for your equipment. [Download Loading Chart](#)

Features

ProX Live Performance Gear® recommends that you engage the services of a licensed engineering professional for complex loading configurations and/or conditions.

- 12" H x 12" W Professional Box Truss W/Bolt Connection.
- Industry Standard Bolt Pattern 6 3/4" x 6 3/4" with 5/8" Holes
- Load Tested & Inspected During Manufacturing and Quality Control
- Includes one set of Four 5/8" - 11 x 2.5" (NC) attachment bolts, nuts, flat & lock washers.

- **Compatible with most other 12" Professional Box Truss Manufacturers**
- **Outer Tube Diameter of 2", Wall Thickness 3mm (1/8"), Diagonal 1", Wall of 3mm (1/8"),**
- **Welded to TÜV standards, 6082-T6 Alloy by GSI SLV-certified welders**
- **Finish: Natural aluminum**



TÜV is a 3rd Party Certification Body and a Nationally Recognized Testing Laboratory (NRTL). TÜV provides inspections, testing, certification & training, with the ultimate objectives of reliability, safety & high quality.

ProX BoltX™ Truss products utilize industry-standard dimensions to be compatible to connect to/ and work with many other manufacturers 12 In. Bolted Box trussing products.

Exterior Dimensions & Weight

12.00"H x 12.00"W x 48.00"L - Weight: 35.00 lbs

Shipping Dimensions & Weight

Box 1 of 1: 13.00"H x 13.00"W x 49.00"L - Shipping Weight: 40.00 lbs

Suggested Shipping Method: Parcel

UPC

019372412236

Our Products and You

Submit your
story

Commonly Asked Questions

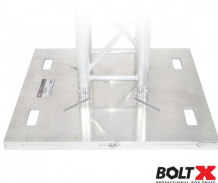
+ Where can I buy one?

[submit a question](#)

Customer Testimonials

What did you think

Related Products



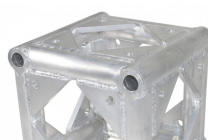
BoltX 24 inch Steel Aluminum Base Plate, Top Plate on a 1" Raised Frame for Bolted Box Truss

SKU: XT-BTBP24A



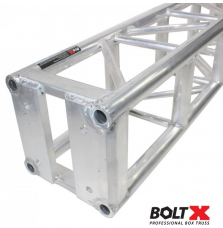
30 Inch Aluminum BoltX Base Plate, Top Plate on a 1" Raised Frame for Standard 12-16 Inch Bolted or F34 Box Truss

SKU: XT-BTBP30A



BoltX 6 Way Block Bolted Professional Box Truss

SKU: XT-BT12-6W



10' Ft. BoltX 12" inch Professional Box Truss Segment | 3mm Wall
SKU: XT-BT1210



8 Ft. BoltX Bolted 12 Inch Professional Box Truss Segment | 3mm Wall
SKU: XT-BT1208

[Show More](#)