



Home > Products > ProX Truss > F34 Ladder Segments 3mm > 4.92 1.5M F34 Professional Ladder Truss Segment 3mm Tubing

SKU: XT-SQPL492

Permalink:

[Search on Google](#)

## 4.92 1.5M F34 Professional Ladder Truss Segment 3mm Tubing

[Find A Dealer](#)

### Product Images



[Download Product Images](#)

### Our Products And You

[Submit your story](#)

### ProX XT-SQPL492 4.92 FT 1.5M F34 Professional Truss Ladder Segment | 3mm Wall

#### Description

**ProX XT-SQPL492 4.92 FT 1.5M F34 Professional Ladder Truss Segment 3mm Tubing** is a Standard F34 Conical Truss Section with a ladder brace on one side (for safe climbing and with thicker tube walls) for enhancing vertical load capacity in combination with standard main rig trussing. ProX Truss is one of the most trusted staging support systems in the industry and is built to the highest standards of safety and performance. It's a rugged and professional trussing solution great for creating indoor or lighting rigs for Live Events, Parties, Galas, Nightclubs, Tradeshows, Mobile productions, and more.

The Easy to Climb, Professional Ladder Truss is a square truss that has one side as a ladder with 2" tubes with 9 3/4" spacing and utilizes a standard conical connector system, which easily mates with other brands of truss of the same size and connector style, and is available in a variety of lengths to suit your need.

It is important to note that the ladder truss is designed to be installed in a vertical orientation. It is typically used at the lift/support points of a truss roofing system or indoor truss structure to make climbing of the structure easier and safer. It should not normally be used in a horizontal position. However, because it has 3mm wall tubes it will still be as strong as the 2mm tube standard XT-SQ trussing and the loading chart for the XT-SQ Truss should be used. The ladder side has no diagonal bracing so if ever used horizontally the ladder side should be oriented down.

**VERY IMPORTANT: Always know your load weight for your equipment:**

**DOWNLOAD PDF – F34 TRUSS LOADING CHART**

#### XT-SQPL SERIES DIMENSIONS:

- **Height:** 11.42in / 290mm
- **Width:** 11.42in / 290mm
- **Weight:** 21lb per 3.28 ft / 9.5kg per meter
- **Main Tube:** 2in / 50mm
- **Premium Tubing - Wall Thickness:** 1/8in / 3mm
- **Braces:** .75in / 20mm
- **Ladder Steps:** 2in / 50mm
- **Ladder Step Spacing:** 9.84in / 250mm
- **Material:** EN-AWT6 6082 Certified Aluminum Welding

TÜV Rheinland® is a 3rd Party Certification Body and a Nationally Recognized Testing Laboratory (NRTL). TÜV provides inspections, testing, certification & training, with the ultimate objectives of reliability, safety & high quality. ProX Truss products utilize industry standard dimensions to be compatible to connect to and work with, many other manufacturers F31/F32/F34 trussing products with conical connectors.

---

### Features

- **In-house Manufacturing to Specifics**
- **TÜV Certified Welding**
- **Compatible with most Conical Truss**
- **Includes Truss Pins & Clips**

---

### Exterior Dimensions & Weight

11.25"H x 11.25"W x 59.00"L - Weight: 27.00 lbs

### Shipping Dimensions & Weight

**Box 1 of 1:** 13.00"H x 13.00"W x 60.50"L - Shipping Weight: 32.00 lbs

**Suggested Shipping Method: Parcel**

### UPC

804589615026

---

### Our Products and You

Submit your story

---

### Commonly Asked Questions

Ask a question

---

### Customer Testimonials

What did you think

---

### Related Products



**White 4.92ft 1.50 meter Lycra Cover Scrim Sleeve fits 12" Quad Box Truss Segment**  
SKU: XTC-SQ492TS-W



**12" Aluminum 6mm Truss Top Plate for F34 F32 F31 Conical Square Truss with Connectors**  
SKU: XT-BP12A



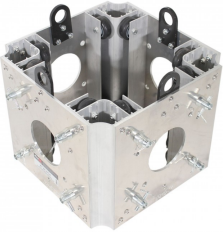
**30" Aluminum 8mm Truss Base Plate for F34 F32 F31 Conical Square Truss with Connectors**

SKU: XT-BP3030A



**Top Truss Section for Electric Motor or Manual Chain Hoist**

SKU: XT-TOPCM



**Ground Support Sleeve Block for F34 Truss Segment Systems**

SKU: XT-BLOCK-MK2

---