



Home > Products > ProX Truss > BoltX™ 12" Professional Bolt Segments 3mm > Straight Segments > 8 Ft. BoltX Bolted 12 Inch Professional Box Truss Segment | 3mm Wall

SKU: XT-BT1208

Permalink: <http://www.proxdir.com>

[Search on Google](#)

## 8 Ft. BoltX Bolted 12 Inch Professional Box Truss Segment | 3mm Wall

[Find A Dealer](#)

### Product Images



[Download Product Images](#)

### Our Products And You

Submit your  
story

### ProX XT-BT1208 8' Ft. BoltX 12" inch Professional Box Truss Segment | 3mm Wall

#### Description

**ProX XT-BT1208 BoltX™** Professional Box Truss is designed and engineered for many applications like stage lighting, concerts, Ninja Obstacle Course type construction, and similar uses. Setting ourselves apart from other box truss manufacturers BoltX™ has an innovative end plate designed and manufactured with heavy-duty aluminum material, welded on both sides, and our exclusive circular rings at each corner of the truss to reduce or eliminate damage to the main chord ends. Since box trussing is often dropped or is dragged along concrete floors, this design will substantially lessen the need for expensive repairs to the tubes from the mishandling of the truss sections. Our outstanding quality control and manufacturing techniques assure excellent fitment at every connection to expedite your setups.

Compatible with most other 12" Professional Box Truss Manufacturers utilizing a 6.75" bolt center pattern.

Each section of the truss includes one set of Four 5/8" - 11 x 2.5" (NC) attachment bolts, nuts, flat & lock washers.

**IMPORTANT NOTE:** All bolts in a span of truss must face the same direction, and truss uprights need to have the bolts on top, nuts on the bottom. When you are tightening the bolts, always wrench down with your ratchet from the nut side, and only turn a few cranks past firm. Bolts should be inspected on a regular basis. Washers must be used on both sides of a connection. Bolt sets should be replaced periodically as normal use degrades the threads on both the bolt and the nut. If you over-tighten your bolts you risk seriously damaging or even breaking them. Remember that any time you are bolting the truss, safety is of the highest importance. This is not a subject to be taken lightly. Before raising a bolted box truss build, one person should inspect all truss connections and the rigging.

IMPORTANT: Always know your load weight for your equipment. [Download Loading Chart](#)

#### Features

ProX Live Performance Gear® recommends that you engage the services of a licensed engineering professional for complex loading configurations and/or conditions.

12" H x 12" W Professional Box Truss W/Bolt Connection

- 12" H x 12" W Professional Box Truss w/Bolt Connection.
- Industry Standard Bolt Pattern 6 3/4" x 6 3/4" with 5/8" Holes
- Load Tested & Inspected During Manufacturing and Quality Control
- Includes one set of Four 5/8" - 11 x 2.5" (NC) attachment bolts, nuts, flat & lock washers.
- Compatible with most other 12" Professional Box Truss Manufacturers
- Outer Tube Diameter of 2", Wall Thickness 3mm (1/8"), Diagonal 1", Wall of 3mm (1/8"),
- Welded to TÜV standards, 6082-T6 Alloy by GSI SLV-certified welders
- Weight: 53 Lbs.
- Finish: Natural aluminum



TÜV is a 3rd Party Certification Body and a Nationally Recognized Testing Laboratory (NRTL). TÜV provides inspections, testing, certification & training, with the ultimate objectives of reliability, safety & high quality.

ProX BoltX™ Truss products utilize industry standard dimensions to be compatible to connect to/ and work with many other manufacturers 12 In. Bolted Box trussing products.

#### Exterior Dimensions & Weight

12.00"H x 12.00"W x 96.00"L - Weight: 53.00 lbs

#### Shipping Dimensions & Weight

Box 1 of 1: 13.00"H x 13.00"W x 97.00"L - Shipping Weight: 62.00 lbs

Suggested Shipping Method: LTL

#### UPC

019372412205

### Our Products and You

Submit your story

### Commonly Asked Questions

+ Where can I buy one?

[submit a question](#)

### Customer Testimonials

What did you think

### Related Products



**BOLT X**  
PROFESSIONAL BOX TRUSS

#### **BoltX 24 inch Steel Aluminum Base Plate, Top Plate on a 1" Raised Frame for Bolted Box Truss**

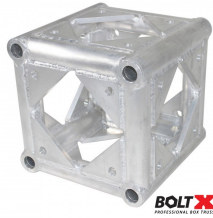
SKU: XT-BTBP24A



**BOLT X**  
PROFESSIONAL BOX TRUSS

#### **30 Inch Aluminum BoltX Base Plate, Top Plate on a 1" Raised Frame for Standard 12-16 Inch Bolted or F34 Box Truss**

SKU: XT-BTBP30A



**BoltX 6 Way Block Bolted Professional Box Truss**

SKU: XT-BT12-6W



**10' Ft. BoltX 12" inch Professional Box Truss Segment | 3mm Wall**

SKU: XT-BT1210



**6' Ft. BoltX 12" inch Professional Box Truss Segment | 3mm Wall**

SKU: XT-BT1206

Show More