



Home > Products > ProX Truss > F34 Conical Segments 2mm > Straight Segments , K-Truss™ F34 Economy 1.5mm > 8.20 Ft. | 2.5M K-Truss F34 Economy Aluminum Truss for displays and non-load bearing systems

SKU: KT-F34SQ820

Permalink: <http://www.proxdir.com/kt-f34sq820>

[Search on Google](#)

8.20 Ft. | 2.5M K-Truss F34 Economy Aluminum Truss for displays and non-load bearing systems

[Find A Dealer](#)

Product Images



[Download Product Images](#)

Our Products And You

Submit your
story

ProX KT-F34SQ820 8.20 Ft. | 2.5M K-Truss F34 Economy Aluminum Truss for displays and non-load bearing systems

Description

ProX **KT-F34SQ820 8.20 Ft. | 2.5M K-Truss F34 Economy Aluminum Truss for displays and non-load bearing systems**. **K-Truss™** is a premium-grade light-duty trussing segment that has been meticulously engineered to meet the highest safety and performance standards. Its durable and lightweight construction makes it an ideal solution for a wide range of non-load-bearing applications, including Trade Show booths, DJ booths, DJ Totems, Architectural Non-load bearing systems, and more.

K-Truss offers an optimal balance between form and function, allowing for reduced load capacity designs without sacrificing its standard truss appearance. It is particularly well suited for trade shows and light-duty construction of display systems, as well as event technology and as a support system for lighter lighting fixtures.

At the core of this system is a square truss that utilizes a standard conical connector system, which allows for easy mating with other brands of truss of the same size and connector style. It comes in a variety of lengths to cater to your unique design requirements and is compatible with different types of corners, base plates, connectors, and accessories that add stability while expanding on limitless configurations.

It is crucial to always know your load weight for your equipment and adhere to the loading chart provided by ProX Live Performance Gear®. This product has a reduced load chart and is not intended to replace or substitute for any standard load-bearing truss segments. Overall, the K-Truss system is a versatile and reliable solution for a wide range of applications, from simple exhibition displays to complex trade show booths.

[VERY IMPORTANT - CLICK HERE](#) to view or download K-Truss™ Loading Chart.

K-Truss™ products utilize industry-standard dimensions to be compatible to connect to/with many other truss brands

Specifications:

Width: 11.42in / 290mm

Height: 11.42in / 290mm

Main Tube: 2in / 50mm

Wall Thickness: .06in / 1.5mm

Braces: .63in / 16mm

DISCLAIMER: ProX Live Performance Gear® (XStatic Pro, Inc.) is not responsible for improper use or overloading by end-users! Consult an engineer for specific applications. This product has a reduced load chart from ProX Live Performance Gear® and is not intended for replacement or substitute for any standard load-bearing truss segments.

Features

- Compatible in SIZE ONLY w/most major brands F34 Box Square Truss
- Not intended for replacement or substitute for any standard or heavy-duty load-bearing truss segments!
- Tolerance Free Standard Conical connector
- Material: EN-AW T6-6061 Aluminium Display Grade Quality
- Constructed to the highest quality by certified welders
- K Series Trussing is an Economy Light-Structural Product primarily designed for display structures.
- The K-Truss™ load capacity is 75% of the 2mm SQ series.
- Engineering Drawings and Design Copyright © 2019 by ProX Live Performance Gear®

Exterior Dimensions & Weight

11.42"H x 11.42"W x 98.40"L - Weight: 22.00 lbs

Shipping Dimensions & Weight

Box 1 of 1: 12.00"H x 12.00"W x 100.00"L - Shipping Weight: 24.00 lbs

Suggested Shipping Method: LTL

UPC

019372411215

Our Products and You

Submit your
story

Commonly Asked Questions

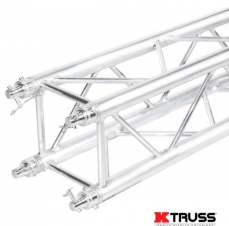
+ Where can I buy one?

[submit a question](#)

Customer Testimonials

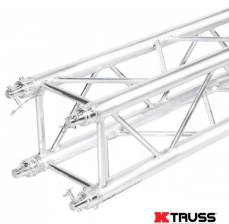
What did you think

Related Products



9.84 Ft. | 3M K-Truss F34 Economy Aluminum Truss for displays and non-load bearing systems

SKU: KT-F34SQ984



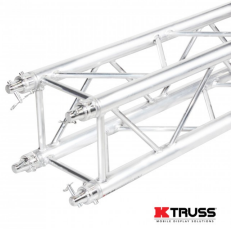
6.56 Ft. | 2M K-Truss F34 Economy Aluminum Truss for displays and non-load bearing systems

SKU: KT-F34SQ656



4.92 Ft. | 1.5M K-Truss F34 Economy Aluminum Truss for displays and non-load bearing systems

SKU: KT-F34SQ492



3.28Ft. | 1M K-Truss F34 Economy Aluminum Truss for displays and non-load bearing systems
SKU: KT-F34SQ328