



Home > Products > ProX Truss > F34 Conical Segments 2mm > Straight Segments > 9.84 Ft - 3.00 M F34 Square Truss Segment | 2 mm Wall

SKU: XT-SQ984

Permalink:

[Search on Google](#)

9.84 Ft - 3.00 M F34 Square Truss Segment | 2 mm Wall

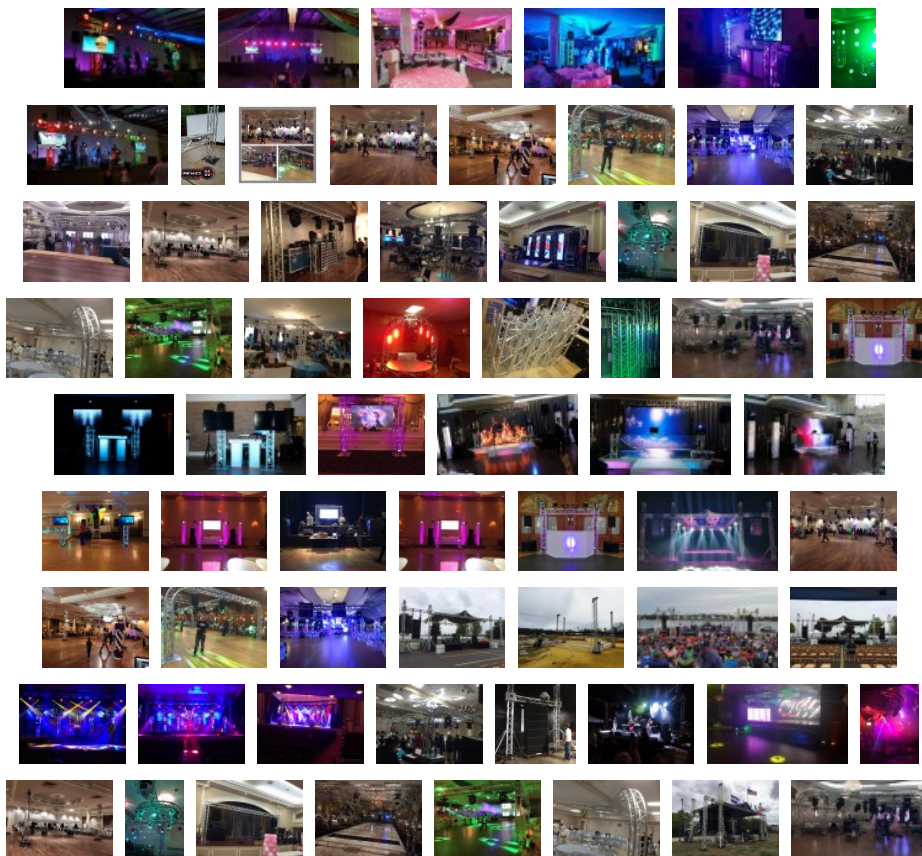
[Find A Dealer](#)

Product Images



[Download Product Images](#)

Our Products And You



[submit your story](#)

ProX XT-SQ984 9.84 Ft - 3.00 M F34 Square Truss Segment | 2 mm Wall

Description

The **ProX XT-SQ984 Truss** is designed for high-frequency usage or installations, which demands higher loading. This trussing is Ideal for rental, touring, and exhibition companies. ProX is one of the most trusted truss manufacturers in the live entertainment industry and is engineered and manufactured to the highest standards of safety and performance. **ProX Live Performance Gear** specializes in high-quality, general-purpose aluminum lighting and stage trussing in F31/F32/F34 and 12" bolted configurations designed for live stages, theaters, nightclubs, church installations, mobile applications, trade shows, and retail applications.

The **ProX Conical Coupling System** allows for genderless trusses, providing a more precise lineup of chords and fastening points, while the conical shape of the couplers helps maintain overall rigidity at the stress points and makes parts harder to damage. *This system also makes assembly/disassembly quick and easy, all you need is a small basic aluminum hammer. The XT-SQ*

system also makes assembly/disassembly quick and easy, all you need is a small brass or aluminum hammer. The XT-SQ series easily mates with most other brands of trusses of the same size and connector type and is available in a variety of lengths to suit your designs. Our outstanding quality control and manufacturing techniques assure excellent fitment at every connection to expedite your setups. We manufacture with [EN-AWT6 6082 Aluminum](#) for safety and strength. The 2mm wall thickness assures durability and strength and can be used for spans up to 52.5 Ft. (16 M).

ProX XT-SQ series F34 trussing is a rugged and durable trussing solution perfect for live outdoor or indoor productions, exhibitions, retail displays as well as nightclubs, and other permanent installations. ProX also manufactures a comprehensive selection of [trussing accessories](#) including [clamps](#), hanging & lifting points, spacers, box corners, mounting poles, [base/top plates](#), and much more to complete your ideas and make your design an impressive rigging project or a simple show booth. Always consult an engineer for complex designs!

ProX XT-SQ SERIES DIMENSIONS:

- Height: 11.42in / 290mm
- Width: 11.42in / 290mm
- Weight: 21lb/9.5kg per 3.28 ft / 1 meter
- Main Tube: 2in / 50mm
- Wall Thickness: .08in / 2mm
- Braces: .75in / 20mm

IMPORTANT: Always know your load weight for your equipment: [XT-SQ Truss Loading Chart](#)

Features

- **Manufactured to Exacting Specifications in our Own Factory!**
- **Actual Length: 9.84 ft. (3.00 Meter) Square Truss Segment**
- **Actual Total Weight: 44 Lbs.**
- **Includes One Connecting Hardware Set of Four**
- **Material: EN-AWT6 6082 Aluminum**
- **TÜV Certified Aluminum Welding**
- **Always Consult an Engineer for Complex Designs!**
- **ProX Live Performance Gear® One Year (365 days) Limited Warranty(Click for Details)**



TÜV Rheinland® is a 3rd Party Certification Body and a Nationally Recognized Testing Laboratory (NRTL). TÜV provides inspections, testing, certification & training, with the ultimate objectives of reliability, safety & high quality.

ProX Truss products utilize industry standard dimensions to be compatible to connect to and work with, many other manufacturers F31/F32/F34 trussing products with conical connectors.

Exterior Dimensions & Weight

118.08"H x 12.00"W x 12.00"L - Weight: 42.00 lbs

Shipping Dimensions & Weight

Box 1 of 1: 14.00"H x 14.00"W x 120.00"L - Shipping Weight: 46.00 lbs

Suggested Shipping Method: LTL

UPC

741459147280

Our Products and You

Submit your
story

Commonly Asked Questions

+ Where can I buy one?

[submit a question](#)

Customer Testimonials

What did you think

Related Products

[9.02 Ft 2.75 M F34 Square Truss Segment | 2 mm Wall](#)

SKU: XT-SQ920



[8.20 Ft. 2.50 M F34 Square Truss Segment | 2 mm Wall](#)

SKU: XT-SQ820



[Power Connector Box for 4X Edison Power Outlet For Indoor Use - New Slim Design](#)

SKU: X-PWEX4BOX



[6.56 Ft - 2.00 M F34 Square Truss Segment | 2 mm Wall](#)

SKU: XT-SQ656



[4.92 Ft - 1.50 M F34 Square Truss Segment | 2 mm Wall](#)

SKU: XT-SQ492

