



Home > Products > ProX Cases > Mixer Console Cases > ATA Digital Audio Mixer Flight Case for Yamaha MGP24X Console with Caster wheels

SKU: XS-YMGP24XW

Permalink:

[Search on Google](#)

ATA Digital Audio Mixer Flight Case for Yamaha MGP24X Console with Caster wheels

[Find A Dealer](#)

Product Images



[Download Product Images](#)

Our Products And You

[Submit your story](#)

ProX XS-YMGP24X ATA Digital Audio Mixer Flight Case for Yamaha MGP24X Console with Caster wheels

Description

ProX **XS-YMGP24X** ATA Digital Audio Mixer **Flight Case for Yamaha MGP24X Console with Caster wheels**. Our custom-designed ATA-style road case is tailored specifically for your Live Mixer Console in the audio console industry, providing the highest level of protection and convenience for your valuable equipment.

The ATA-300 Flight Style Road Case with 2x Low Profile fixed caster wheels is a rugged solution for your equipment protection needs. Its interior is fortified with high-density foam for exceptional support, while recessed spring action handles on both sides make it easy to transport. The case is built to last with heavy-duty steel ball corners and dual anchor rivets, all encased in premium Series 3/8" plywood. Additionally, its industrial recessed butterfly twist lock latches, padlock-compatible, provide extra security for your valuable gear during transit and storage.

At the forefront of case design, Honeycomb Digital™ by ProX Live Performance Gear® showcases a sleek hexagonal pattern. This unique style combines with top-notch gear protection, thanks to a high-quality laminate that shields against scuffs and scratches.

Crafted with precision and top-quality materials, this road case ensures ultimate security during transportation, combining functionality and durability with its low-profile fixed wheels.

Features

- **ATA-300 Flight Style Road Case**
- **2x Low Profile fixed caster wheels**
- **High-density foam interior support & casing**
- **Recessed spring action Handles per Side**
- **Heavy and powerful steel ball corners**
- **Dual anchor rivets**
- **Premium Series 3/8" Plywood**
- **Industrial Recessed butterfly twist lock latches that can be padlocked**
- **ProX Limited Lifetime Warranty**
- *** All Foam padding made from 85% recycled materials**

Interior Dimensions

CABLES (1): 3.50"H x 16.50"W x 2.50"L + (6.50" Lid)

CONSOLE (1): 3.50"H x 22.00"W x 32.00"L + (6.50" Lid)

Exterior Dimensions & Weight

11.00"H x 29.00"W x 36.00"L - Weight: 48.00 lbs

Shipping Dimensions & Weight

Box 1 of 1: 12.00"H x 30.00"W x 37.00"L - Shipping Weight: 51.00 lbs

Suggested Shipping Method: Parcel

UPC

019372407935

Our Products and You

Submit your
story

Commonly Asked Questions

+ Where can I buy one?

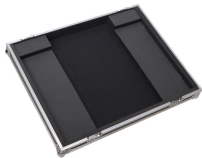
+ Does the equipment shown in the photo come with the case?

[submit a question](#)

Customer Testimonials

What did you think

Related Products



[ATA Digital Audio Mixer Flight Case for Yamaha MGP24X Console with Caster wheels](#)

SKU: XS-YMGP24XW



[ATA Digital Audio Mixer Flight Case for Yamaha MPG 32X Console with Caster Wheels](#)

SKU: XS-YMGP32XW
