



Home > Products > ProX Cases > Mixer Console Cases > ATA Digital Audio Mixer Flight Case for Mackie 2404VIZ4 Console with Wheels

SKU: XS-M2404VLZ4W

Permalink:

[Search on Google](#)

ATA Digital Audio Mixer Flight Case for Mackie 2404VIZ4 Console with Wheels

[Find A Dealer](#)

Product Images



[Download Product Images](#)

Our Products And You

[Submit your story](#)

ProX XS-M2404VLZ4W ATA Flight Road Digital Audio Mixer Console Case for Mackie 2404VIZ4 with wheels

Description

ProX **XS-M2404VLZ4W** ATA Flight Road Digital Audio Mixer **Console Case for Mackie 2404VIZ4 with wheels** Our custom-designed ATA-style road case is tailored specifically for your Live Mixer Console in the audio console industry, providing the highest level of protection and convenience for your valuable equipment.

The ATA-300 Flight Style Road Case with 2x Low Profile fixed caster wheels is a rugged solution for your equipment protection needs. Its interior is fortified with high-density foam for exceptional support, while recessed spring action handles on both sides make it easy to transport. The case is built to last with heavy-duty steel ball corners and dual anchor rivets, all encased in premium Series 3/8" plywood. Additionally, its industrial recessed butterfly twist lock latches, padlock-compatible, provide extra security for your valuable gear during transit and storage.

At the forefront of case design, Honeycomb Digital™ by ProX Live Performance Gear® showcases a sleek hexagonal pattern. This unique style combines with top-notch gear protection, thanks to a high-quality laminate that shields against scuffs and scratches.

Crafted with precision and top-quality materials, this road case ensures ultimate security during transportation, combining functionality and durability with its low-profile fixed wheels.

Features

- **ATA-300 Flight Style Road Case**
- **High-density foam interior support & casing**
- **Spring action recessed handles**
- **Recessed spring action Handles per Side**
- **Heavy and powerful steel ball corners**
- **Dual anchor rivets**
- **Premium Series 3/8" Plywood**
- **2x Low-profile fixed wheels**
- **Industrial Recessed butterfly twist lock latches that can be padlocked**
- **ProX Limited Lifetime Warranty**
- *** All Foam padding made from 85% recycled materials**

Interior Dimensions

(1): 6.00"H x 19.50"W x 29.50"L

Exterior Dimensions & Weight

10.00"H x 25.00"W x 32.50"L - Weight: 40.00 lbs

Shipping Dimensions & Weight

Box 1 of 1: 12.00"H x 27.00"W x 34.50"L - Shipping Weight: 49.00 lbs

Suggested Shipping Method: Parcel

UPC

019372407522

Our Products and You

Submit your
story

Commonly Asked Questions

+ Where can I buy one?

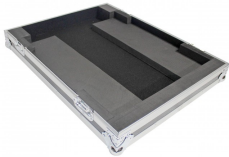
+ Does the equipment shown in the photo come with the case?

[submit a question](#)

Customer Testimonials

What did you think

Related Products



[ATA Digital Audio Mixer Flight Case for Mackie Pro FX16 Console](#)

SKU: XS-MPROFX16



[ATA Flight Road Digital Audio Mixer Console Case for Mackie M3204VLZ4 with Wheels](#)

SKU: XS-M3204VLZ4W
