



Home > Products > ProX Truss > BoltX™ 12" Professional Bolt Segments 3mm > BoltX™ Accessories , BoltX™ 12" Black Segments 3mm > BoltX™ Accessories Black , Blocks, Corners & Junctions > Junction Blocks > BoltX 6-Way Block Bolted Professional Box Truss – Black Finish

SKU: XT-BT12-6W BLK

Permalink: <http://www.proxdir.com>

[Search on Google](#)

BoltX 6-Way Block Bolted Professional Box Truss – Black Finish

[Find A Dealer](#)

Product Images



[Download Product Images](#)

Our Products And You

Submit your
story

ProX XT-BT12-6W BLK BoltX 6-Way Block Bolted Professional Box Truss – Black Finish

Description

ProX XT-BT12-6W BLK BoltX™ 6-Way Block, Professional Box Truss is designed and engineered for many applications like stage lighting, concerts, Ninja Obstacle Course type construction, and similar uses. Setting ourselves apart from other box truss manufacturers BoltX™ has an innovative end plate designed and manufactured with heavy-duty aluminum material, welded on both sides, and our exclusive circular rings at each corner of the truss to reduce or eliminate damage to the main chord ends. Our outstanding quality control and manufacturing techniques assure excellent fitment at every connection to expedite your setups. This segment has a stealth black powder-coated finish for hiding cables and lighting, it also has a flat anti-glare look.

Compatible with most other 12" Professional Box Truss Manufacturers utilizing a 6.75" bolt center pattern.

Each 6 Way Block includes Four sets of Four 5/8" - 11 x 2.5" (NC) attachment bolts, nuts, flat & lock washers. (Total of 16 Bolts nuts and washers)

IMPORTANT NOTE: All bolts in a span of truss must face the same direction, and truss uprights need to have the bolts on top, nuts on the bottom. When you are tightening the bolts, always wrench down with your ratchet from the nut side, and only turn a few cranks past firm. Bolts should be inspected on a regular basis.

Washers must be used on both sides of a connection. Bolt sets should be replaced periodically as normal use degrades the threads on both the bolt and the nut. If you over-tighten your bolts you risk seriously damaging or even breaking them. Remember that any time you are bolting the truss, safety is of the highest importance.

This is not a subject to be taken lightly. Before raising a bolted box truss build, one person should inspect all truss connections and the rigging.

IMPORTANT: Always know your load weight for your equipment. [Download Loading Chart](#)

Features

ProX Live Performance Gear® recommends that you engage the services of a licensed engineering professional for complex loading configurations and/or conditions.

Black Powder Coated Finish

- **Black Powder Coated Finish**
- **12" x 12" x 12" Professional 6 Way Block W/Bolt Connection.**
- **Industry Standard Bolt Pattern 6 3/4" x 6 3/4" with 5/8" Holes**
- **Load Tested & Inspected During Manufacturing and Quality Control**
- **Includes Four sets of Four 5/8" - 11 x 2.5" (NC) attachment bolts, nuts, flat & lock washers.**
- **Compatible with most other 12" Professional Box Truss Manufacturers**
- **Outer Tube Diameter of 2", Wall Thickness 3mm (1/8"), Diagonal 1", Wall of 3mm (1/8"),**
- **Welded to TÜV standards, 6082-T6 Alloy by GSI SLV-certified welders**
- **Weight: 17.5 Lbs.**



TUV is a 3rd Party Certification Body and a Nationally Recognized Testing Laboratory (NRTL). TUV provides inspections, testing, certification & training, with the ultimate objectives of reliability, safety & high quality.

ProX BoltX™ Truss products utilize industry standard dimensions to be compatible to connect to/ and work with many other manufacturers 12 In. Bolted Box trussing products.

Exterior Dimensions & Weight

12.00"H x 12.00"W x 12.00"L - Weight: 21.00 lbs

Shipping Dimensions & Weight

Box 1 of 1: 13.00"H x 13.00"W x 13.00"L - Shipping Weight: 22.00 lbs

UPC

019372414537

Our Products and You

Submit your
story

Commonly Asked Questions

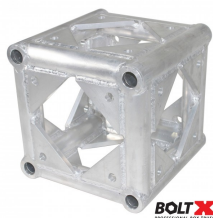
+ Where can I buy one?

[submit a question](#)

Customer Testimonials

What did you think

Related Products



BoltX 6 Way Block Bolted Professional Box Truss

SKU: XT-BT12-6W



8 Ft. BoltX Black Bolted 12 Inch Professional Box Truss Segment | 3mm Wall – Black Finish

SKU: XT-BT1208 BLK



10 Ft. BoltX Black Bolted 12 Inch Professional Box Truss Segment | 3mm Wall – Black Finish



FINISH
SKU: XT-BT1210BLK



30 Inch Aluminum BoltX Base Plate, Top Plate on a 1" Raised Frame for Standard 12-16 Inch Bolted or F34 Box Truss
SKU: XT-BTBP30A
