



Home > Products > ProX Truss > Couplers, Spacers, and Hardware > Spacers > Conical Truss Coupler 82mm - 3.22 inch Double Female

SKU: XT-SPFF82

Permalink: [Search on Google](#)

Conical Truss Coupler 82mm - 3.22 inch Double Female

[Find A Dealer](#)

Product Images

[Download Product Images](#)

Our Products And You

[Submit your story](#)

ProX XT-SPFF82 Conical Truss Coupler 82mm - 3.22 inch Double Female

Description

This XT-SPFF82 Spacer Female to Female Coupler is designed to securely connect truss corners. 2" Truss Spacer Female to Female 82mm/3.22inch

ProX Live Performance Gear® specializes in high-quality, general-purpose aluminum lighting and stage trussing designed for live stages, theaters, nightclubs, church installations, mobile applications, trade shows, and retail applications. Our products are built using **6082-T6 Aluminum Alloy** compositions. This lightweight, corrosion-resistant aluminum has a very high tensile strength, giving you the support and stability, you need. The ProX **Conical Coupling System** allows for genderless trusses, providing a more precise line up of chords and fastening points, while the conical shape of the couplers helps maintain overall rigidity at the stress points and makes parts harder to damage. This system also makes assembly quick and easy with very few tools needed to complete set up.

Dimensions:

L:210 x B:50 x H:50 mm

Weight:

0.72 kg

Features

Dimensions:

L:210 x B:50 x H:50 mm

Weight:

0.72 kg

Suggested Shipping Method: Parcel

UPC

019372406501

Our Products and You

[Submit your story](#)

Commonly Asked Questions

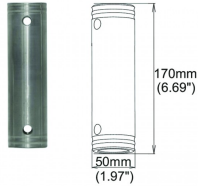
+ Where can I buy one?

[submit a question](#)

Customer Testimonials

What did you think

Related Products



Spacer 170mm (6.69") female

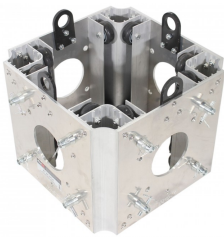
Spacer 170mm Female Coupler

SKU: XT-SPFF170



Spacer 105mm Female Coupler

SKU: XT-SPFF105



Ground Support Sleeve Block for F34 Truss Segment Systems

SKU: XT-BLOCK-MK2



6 Way Square Truss Junction Block - Includes 2 Way 8 Half Conical Couplers

SKU: XT-JB6W-2W
