

Our office is closed on Monday April 29th & Tuesday April 30th for Passover



Home > Products > ProX Truss > LED Wall Support , Roofing Systems > Hanging and Support Systems > LED Screen Display Panel Video Fly Wall Truss Ground Support System 20'W x 23'H Outdoor w/ Hoist

SKU: XTP-GS2023

Permalink:

[Search on Google](#)

LED Screen Display Panel Video Fly Wall Truss Ground Support System 20'W x 23'H Outdoor w/ Hoist

[Find A Dealer](#)

Product Images



[Download Product Images](#)

Our Products And You



[submit your story](#)

ProX XTP-GS2023 LED Screen Display Panel Video Fly Wall Truss Ground Support System 20'W x 23'H Outdoor w/ Hoist

Description

The **ProX XTP-GS2023 LED Panel Support System** package is 20'W x 23'H and constructed with our heavy-duty Aluminum XT truss combined with our modular ground support towers as well as the GSBPACK3 Lift System. (*LED WALL NOT INCLUDED*)

This Indoor / outdoor Truss Ground Support System is designed to fly LED Screen Display Panel Video Wall

The **ProX XT-SQ Series Truss** is one of the most trusted staging support systems in the industry and is built to the highest standards of safety and performance. It's a rugged and durable trussing solution perfect for live outdoor productions, nightclubs, and permanent installations. ProX XT Series Truss compares favorably to the other major trussing manufacturers. We manufacture with EN-AWT6 6082 Aluminum for safety and strength. Our XT series F34 square truss utilizes a standard conical connector system, which easily mates with other brands of the truss of the same size and connector type, and is available in a variety of lengths to suit your designs -- while our outstanding quality control and manufacturing techniques assure excellent fitment at every connection. ProX offers a wide variety of corners, base plates, connectors and accessories that add stability while expanding on limitless design configurations.

Always know your load weight for your equipment: [VERY IMPORTANT - CLICK HERE](#) for Truss Loading Chart.

- **Tolerance Free Standard Conical connector**
- **Main tube wall thickness of .08in**

XT-SQ SERIES DIMENSIONS:

- Height: 11.42in / 290mm
- Width: 11.42in / 290mm
- Weight: 21lb per 3.28 ft / 9,5kg per meter
- Main Tube: 2in / 50mm
- Wall Thickness: .08in / 2mm
- Braces: .75in / 20mm

Includes:

2 XTP-GSBPACK3

6 XT-SQ984 9.84ft (3.00m) Square Truss Segment With Connecting Hardware

1 XT-MCH1TX2-30FT Sets of 2 1T Manual Chain Stage Hoist with 30ft Chain,

Features



TUV Is a 3rd Party Certification Body and a Nationally Recognized Testing Laboratory (NRTL). TUV provides inspections, testing, certification & training, with the ultimate objectives of reliability, safety & high quality.

- **Manufactured in our Own Factory!**
- **Material: EN-AWT6 6082 Aluminum**
- **TUV Certified Aluminium Welding**

ProX Truss products utilize industry-standard dimensions to be compatible to connect to/with many other manufacturers F34 trussing products.

Package Contents

- [XT-SQ984](#) (6) 9.84 Ft - 3.00 M F34 Square Truss Segment | 2 mm Wall
- [XT-MCH1TX2-30FT](#) (1) Pair 1 Ton Manual Chain Hoist with 30 Ft (9 M) Chain for Stage Truss roof system and line array speakers
- [XT-BLOCK-MK2](#) (2) Ground Support Sleeve Block for F34 Truss Segment Systems
- [XT-TOPCM](#) (2) Top Truss Section for Electric Motor or Manual Chain Hoist
- [XT-HINGE](#) (8) Conical Tube Ground Support Post towers Male to Male Hinge Joint Fits F31 F32 F34
- [XT-GSB MK3](#) (2) Universal Vertical Tower Truss Ground Support Base on Wheels with Leveling Jacks for F34, F44 and 12" Bolt truss
- [XT-SQ328](#) (2) 3.28 Ft - 1.00 M F34 Square Truss Segment | 2 mm Wall
- [XT-GSOUTS3](#) (8) Single 3 Ft. Outrigger Support Brace for Leveling Ground Support Truss Tower Base

Exterior Dimensions & Weight

XT-GSOUTS3 (8): 64.00"H x 2.00"W x 37.50"L - Weight: 29.00 lbs

XT-SQ328 (2): 39.36"H x 11.42"W x 11.42"L - Weight: 19.00 lbs

XT-TOPCM (2): 11.50"H x 9.50"W x 24.00"L - Weight: 26.40 lbs

XT-BLOCK-MK2 (2): 18.50"H x 22.50"W x 22.50"L - Weight: 77.30 lbs

XT-SQ984 (6): 118.08"H x 12.00"W x 12.00"L - Weight: 42.00 lbs

Shipping Dimensions & Weight

Box 1 of 8: XT-GSOUTS3 (8 boxes) 6.00"H x 8.00"W x 64.00"L - Shipping Weight: 34.00 lbs

Box 2 of 8: XT-SQ328 (2 boxes) 41.50"H x 12.50"W x 12.50"L - Shipping Weight: 21.00 lbs

Box 3 of 8: XT-GSB MK3 (2 boxes) 9.00"H x 29.00"W x 29.00"L - Shipping Weight: 70.00 lbs

Box 4 of 8: XT-HINGE (8 boxes) 2.00"H x 5.00"W x 5.00"L - Shipping Weight: 2.50 lbs

Box 5 of 8: XT-TOPCM (2 boxes) 12.00"H x 10.00"W x 25.00"L - Shipping Weight: 28.00 lbs

Box 6 of 8: XT-BLOCK-MK2 (2 boxes) 20.00"H x 24.00"W x 24.00"L - Shipping Weight: 80.00 lbs

Box 7 of 8: XT-MCH1TX2-30FT 11.00"H x 19.00"W x 15.00"L - Shipping Weight: 104.00 lbs

Box 8 of 8: XT-SQ984 (6 boxes) 14.00"H x 14.00"W x 120.00"L - Shipping Weight: 46.00 lbs

Suggested Shipping Method: LTL

UPC

019372414322

Our Products and You

Submit your
story

Commonly Asked Questions

+ Where can I buy one?

[submit a question](#)

Customer Testimonials

What did you think

Related Products

Top Truss Section for Electric Motor or Manual Chain Hoist

SKU: XT-TOPCM



Universal Vertical Tower Truss Ground Support Base on Wheels with Leveling Jacks for F34, F44 and 12" Bolt truss

SKU: XT-GSB MK3



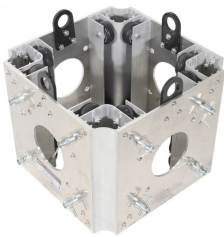
Pair 1 Ton Manual Chain Hoist with 30 Ft (9 M) Chain for Stage Truss roof system and line array speakers

SKU: XT-MCH1TX2-30FT



Ground Support Sleeve Block for F34 Truss Segment Systems

SKU: XT-BLOCK-MK2



3.28 Ft - 1.00 M F34 Square Truss Segment | 2 mm Wall

SKU: XT-SQ328

