



Home > Products > ProX Cases > Mobile DJ Cases > Mixer Cases > 12" Mixer > Mixer ATA Flight Hard Case for Large Format 12" Universal DJ Mixer with Laptop Shelf Black on Black

SKU: XS-M12LTBL

Permalink:

[Search on Google](#)

Mixer ATA Flight Hard Case for Large Format 12" Universal DJ Mixer with Laptop Shelf Black on Black

[Find A Dealer](#)

Product Images



[Download Product Images](#)

Our Products And You

[Submit your story](#)

ProX XS-M12LTBL Universal ATA Flight Hard Road Gig Ready Case Large Format 12" DJ Mixer w Glide Laptop Shelf Black on Black

Description

The **ProX Black on Black XS-M12LTBL** is the perfect companion for the state-of-the-art Mobile DJ, and includes a built-in sliding Laptop Shelf! Built with top grade heavy-duty materials, the XS-M12LTBL gives your DJ equipment protection with maximum durability, dependability and security.

The XS-M12LTBL with **sliding laptop shelf** is constructed with our rugged signature **3/8" Gig-Ready Series Plywood**, durable rubber wheels, reinforced steel ball corners, as well as recessed steel padded handles and latches. There is additional space for cables and small accessories in the back and underneath the unit for convenience, as well as a removable front panel for you to access front input jacks easily. The front removable panel allows for easy access to the front controls and headphone/mic jacks.

It's all about the options. This item is part of our **Black On Black series**, which features an **all-black exterior** for a sleek, professional look. There's no going back. Black is always in style, and an all-black road case for your professional gear will always make a statement.

The **XS-M12LTBL** has all the features you are looking for in a high-grade DJ Mixer Case. You will definitely be satisfied with this top of the line product from the signature series line of products from ProX Cases!

This ProX Universal 12" Mixer case is manufactured with the Honey Comb laminated surface Design. Made with the super-sleek look of Honey Comb hexagon grids on all shell surfaces, which gives the cases an almost alien look! Also as opposed to regular laminated plywood cases from other manufacturers, the ProX Honey Comb design helps prevent minor to mild scratches. The Honey Comb Digital line design was inspired by the design of New York City Street Manhole covers which are made to handle rough and tough everyday punishment.

All ProX cases during the manufacturing process use CNC technology to assure all cases are consistently built to strict specifications that are required for the high-quality standards that ProX cases is known for since 1984.

- ProX Goes Green: The durable hard rubber foams used in our cases contain 70% recycled content. Of that 70%, 80% of it comes from recycled plastic bottles and the remaining 20% from the recycled post-industrial material. At ProX we strive to make the world a better place!

Features

- **Black on Black Digital Honey Comb exterior design**
- **ATA-300 Style Gig Ready Flight Road Case**
- **Easy locking fit and tongue**
- **High-density foam interior support & casing**
- **Recessed spring action Handles per Side**
- **Heavy and powerful steel ball corners**
- **3" cables and small accessories in the back**
- **Sliding Laptop Shelf**
- **Dual anchor rivets**
- **Signature Series Certified Laminated Gig ready 3/8" plywood**
- **Industrial Recessed butterfly twist lock latches that can be padlocked**
- **Industrial Grade Rubber Feet**
- **Cable access hole with removable emblem cover**
- **ProX Limited Lifetime Warranty**

To Fit

Any trademarks, trade names or brand names appearing herein that do not belong to ProX are the property of their respective owners and/or companies, and such appearance doesn't and shall not constitute or imply endorsement, sponsorship or recommendation by ProX.

Allen & Heath

(1) Xone • [View all products for Allen & Heath Xone](#)

Universal 12" Mixers

(1) 12" Mixers • [View all products for Universal 12" Mixers 12" Mixers](#)

Exterior Dimensions & Weight

12.00"H x 21.00"W x 13.00"L - Weight: 22.00 lbs

Shipping Dimensions & Weight

Box 1 of 1: 9.00"H x 23.00"W x 14.50"L - Shipping Weight: 27.00 lbs

Suggested Shipping Method: Parcel

UPC

741459147884

Our Products and You

Submit your
story

Commonly Asked Questions

+ Where can I buy one?

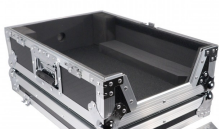
+ Does the equipment shown in the photo come with the case?

[submit a question](#)

Customer Testimonials

What did you think

Related Products



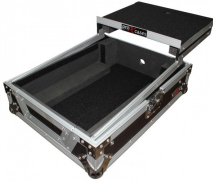
[Flight Case for 12 In. Large Format DJ Mixers | Universal](#)

SKU: XS-M12



Flight Case for 12 In. Large Format DJ Mixers | Universal | Black on Black

SKU: XS-M12BL



Mixer ATA Flight Hard Case for Large Format 12" Universal DJ Mixer with Laptop Shelf

SKU: XS-M12LT



**Mixer ATA Flight Hard Case for Large Format 12" Universal DJ Mixer with Laptop Shelf
Black on Black**

SKU: XS-M12LTBL
