



Home > Products > ProX Truss > Pre-Rigging & Mobile Systems > , ProX Stands > Mobile Workstations , Multi-Carts and Dollies > Modular Mobile Media TV DJ Station Booth for ProX XT-GRU Rapid Grid Modular System and base plate with wheels

SKU: XT-MMDJTV01

Permalink: <http://www.proxdir.com>

[Search on Google](#)

## Modular Mobile Media TV DJ Station Booth for ProX XT-GRU Rapid Grid Modular System and base plate with wheels

[Find A Dealer](#)

### Product Images



[Download Product Images](#)

### Our Products And You

Submit your  
story

### ProX XT-MMDJTV01 Modular Mobile Media TV DJ Station Booth for ProX XT-GRU Rapid Grid Modular System and base plate with wheels

#### Description

This DJ stand is a truss accessory that is compatible with F32 and F34 trussing systems. Capable of mounting flat-screen TVs in front of the stand with an [XT-MEDIAMOUNT](#) mount. The DJ Station can be made mobile with the [XT-BP2430W](#)

The Rapid Grid™ grid units allow for grid configurations tailored to your needs. You can hang up to 10 grids beneath each other for custom layouts. The hanging frames are built from durable EN-AWT6 6082 aluminum frames and each grid will fit small to medium-sized moving-head lights. The rolling baseplate is constructed from 10mm AWT6 6082 Aluminum Plate with handle cutouts and multiple drilled stud mounting holes for versatility. The baseplate is designed to work with the XT-GRU3024 grid units but can also be configured to work with F34 trussing products as well. The baseplate casters allow for easy moving of the XT-GRU-PKGX3 from the truck to venue to stage with minimal effort and protection for your lighting devices.

The Rapid Grid™ Modular System allows endless configurations for single fixtures, double hanging or ladders of multiple fixtures, which can also be expanded to create a wall of hanging positions. Each U module has two safety point attachments, one on each side for use with multiple styles of fixtures. The ProX GRU Rapid Grid™ System has been designed for quick deployment and takedown in any environment. The lightweight yet strong aluminum construction is additionally reinforced to provide added stability and safety.

Easily expand the configurations of the ProX GRU Rapid Grid™ System by utilizing the standard ProX Truss F31 selection of single tube 2" pipes, T sections, spigots, or corner adapters. These products all will fit into the GRU system which allows you to create hanging structures in an unlimited amount of designs for lighting utility.

#### Package Includes:

- (1) [XT-BP2430W](#)
- (2) [XT-GRU3024](#)
- (2) [XT-GRTOP24](#)
- (1) [XT-GRU-ARM](#)
- (1) [XT-MEDIAMOUNT](#)

---

## Features

- **Download the ProX Truss/Rigging Safety Guide**
- **Designed for the XT-GRU3024 Rapid Grid™ Unit**
- **Manufactured in our Own Factory!**
- **Material: EN-AWT6 6061 Aluminum**
- **TUV Certified Aluminium Fabrication**
- **Includes Connecting Hardware**

---

## Package Contents

- [XT-BP2430W](#) (1) 24 x 30 in. Module Base Plate with Locking Casters for ProX XT-GRU Rapid Grid Modular System
- [XT-GRU3024](#) (2) 30 x 24 in. U Shape Module for ProX XT-GRU Rapid Grid Modular System
- [XT-GRU-ARM](#) (1) 24" Truss Tube with Dual Clamp for ProX XT-GRU Rapid Grid Modular System
- [XT-GRTOP24](#) (2) 24" Width Module Top Bar for ProX XT-GRU Rapid Grid Modular System
- [XT-MEDIAMOUNT](#) (1) Universal 32" to 80" TV Bracket Clamp with Vesa Mounting Bracket for F34 F32 12" Bolt Truss or Speaker Stands

---

## Exterior Dimensions & Weight

**XT-BP2430W (1):** 6.00"H x 24.00"W x 37.00"L - Weight: 38.00 lbs

## Shipping Dimensions & Weight

**Box 1 of 5:** XT-MEDIAMOUNT 6.00"H x 12.00"W x 16.00"L - Shipping Weight: 12.00 lbs

**Box 2 of 5:** XT-GRTOP24 (2 boxes) 3.00"H x 24.00"W x 5.00"L - Shipping Weight: 5.00 lbs

**Box 3 of 5:** XT-GRU-ARM 3.00"H x 24.00"W x 5.00"L - Shipping Weight: 4.00 lbs

**Box 4 of 5:** XT-GRU3024 (2 boxes) 6.00"H x 25.00"W x 32.00"L - Shipping Weight: 23.00 lbs

**Box 5 of 5:** XT-BP2430W 7.00"H x 25.00"W x 38.00"L - Shipping Weight: 40.00 lbs

**Suggested Shipping Method: Parcel**

## UPC

022099559368

---

## Our Products and You

Submit your  
story

---

## Commonly Asked Questions

+ Where can I buy one?

[submit a question](#)

---

## Customer Testimonials

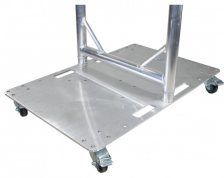
What did you think

---

## Related Products



**[30 x 24 in. U Shape Module for ProX XT-GRU Rapid Grid Modular System](#)**  
SKU: XT-GRU3024



**24 x 30 in. Module Base Plate with Locking Casters for ProX XT-GRU Rapid Grid Modular System**

SKU: XT-BP2430W



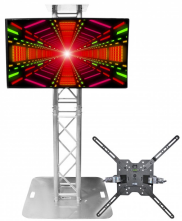
**24" Width Module Top Bar for ProX XT-GRU Rapid Grid Modular System**

SKU: XT-GRTOP24



**24" Truss Tube with Dual Clamp for ProX XT-GRU Rapid Grid Modular System**

SKU: XT-GRU-ARM



**Universal 32" to 80" TV Bracket Clamp with Vesa Mounting Bracket for F34 F32 12" Bolt Truss or Speaker Stands**

SKU: XT-MEDIAMOUNT