



Home > Products > ProX Truss > Ground Support > , Suspension Accessories > > Pair 1 Ton Manual Chain Hoist with 30 Ft (9 M) Chain for Stage Truss roof system and line array speakers

SKU: XT-MCH1TX2-30FT

Permalink: <http://www.proxdir.com/xt-mch1tx2-30ft>

[Search on Google](#)

## Pair 1 Ton Manual Chain Hoist with 30 Ft (9 M) Chain for Stage Truss roof system and line array speakers

[Find A Dealer](#)

### Product Images



[Download Product Images](#)

### Our Products And You

Submit your  
story

### ProX XT-MCH1TX2-30FT Pair 1 Ton Manual Chain Hoist with 30 Ft (9 M) Chain for Stage Truss roof system and line array speakers

#### Description

Set of 2 Manual Chain Hoist. No electricity is needed, just manual labor.

Each Chain is rated for 1-ton capacity load bearing.

Included are a chain bag for each chain hoist and a Heavy Duty case for both hoists.

Ideal for Stage, truss, and mobile stage.

#### Features

- Portable, lightweight hoist is durable and easy to operate
- Full-forged drop steel swivel hooks with safety latch for a secure lift
- Compact design and low headroom
- Mechanical load brake for positive load control when lifting or spotting
- Rugged hardened steel construction
- Galvanized Grade 80 chain
- Chain bag holds 30ft of chain
- Forged steel hooks swivel 360° and have safety latches
- Designed with a safety factor 4 times rated capacity
- Meets ANSI/ASME standards
- Lifting Capacity 1000 kgs
- Pulling force (N) 305
- Diameter of lifting chain 6X18 (mm)
- Diameter of pulling chain 5X25 (mm)

**Shipping Dimensions & Weight**  
**Box 1 of 1:** 11.00"H x 19.00"W x 15.00"L - Shipping Weight: 104.00 lbs

**Suggested Shipping Method:** Parcel

**UPC**  
019372406945

**Our Products and You**

Submit your  
story

**Commonly Asked Questions**

+ Where can I buy one?

[submit a question](#)

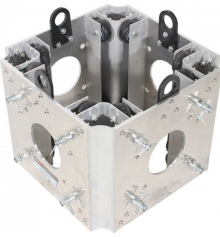
**Customer Testimonials**

What did you think

**Related Products**



**Top Truss Section for Electric Motor or Manual Chain Hoist**  
SKU: XT-TOPCM



**Ground Support Sleeve Block for F34 Truss Segment Systems**  
SKU: XT-BLOCK-MK2



**9.84 Ft - 3.00 M F34 Square Truss Segment | 2 mm Wall**  
SKU: XT-SQ984



**30" Aluminum 8mm Truss Base Plate for F34 F32 F31 Conical Square Truss with Connectors**  
SKU: XT-BP3030A

