



Home > Products > ProX Truss > Ground Support > Hoist & Motors , Suspension Accessories > Hoists > Set of Two 2-Ton 30' Ft. Manual Chain Hoist with ATA Flight Style Road Case for stage truss roof system and line array speakers

SKU: XT-MCH2TX2-30FT

Permalink:

[Search on Google](#)

## Set of Two 2-Ton 30' Ft. Manual Chain Hoist with ATA Flight Style Road Case for stage truss roof system and line array speakers

[Find A Dealer](#)

### Product Images



[Download Product Images](#)

### Our Products And You

Submit your  
story

### ProX XT-MCHTWOX2-30FT Set of Two 2-Ton 30' Ft. Manual Chain Hoist with ATA Flight Style Road Case for stage truss roof system and line array speakers

#### Description

**ProX XT-MCHTWOX2-30FT Set of Two 2-Ton 30' Ft. Manual Chain Hoist with ATA Flight Style Road Case** Introducing our Set of 2 Manual Chain Hoist, the perfect solution for all your stage production needs. These hoists are designed to help you lift and move heavy objects with ease, without the need for electricity.

Each chain hoist is rated for a 2-ton capacity load bearing, making them ideal for even the heaviest of loads. The manual operation of these hoists means that you can use them anywhere, at any time, without the need for a power source. This makes them perfect for use in outdoor venues, on mobile stages, or in areas where electricity is not readily available.

Included with each Chain Hoist is a convenient chain bag, providing you with a safe and secure place to store your chains when not in use. This helps to protect your equipment from damage and keeps them organized for quick and easy access when needed. To make transportation even more convenient, we've also included a Heavy-duty flight style road case that can hold both hoists. This makes it easy to move them around from venue to venue, ensuring that you always have the right equipment for the job.

These Manual Chain Hoists are the perfect addition to any stage production, providing you with the power and flexibility you need to create a truly spectacular show. Whether you're working with a large truss system, moving heavy equipment or setting up a mobile stage, these hoists are up to the task.

#### Features

- **Includes Two Manual Chain Hoists**
- **2 Ton Max Weight (Per Chain Hoist)**
- **Includes Flight Style Road Case**
- **Great for Line Array Systems**
- **Can be used for General Purposes**
- **Lifting Capacity 2000 kgs**
- **Pulling force (N) 360**
- **Diameter of lifting chain 8X24 (mm)**
- **Diameter of pulling chain 5X25 (mm)**

### Shipping Dimensions & Weight

Box 1 of 1: 17.00"H x 20.00"W x 20.00"L - Shipping Weight: 173.00 lbs

Suggested Shipping Method: Parcel

### UPC

019372413240

## Our Products and You

Submit your story

## Commonly Asked Questions

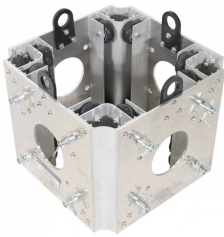
+ Where can I buy one?

[submit a question](#)

## Customer Testimonials

What did you think

## Related Products



### Ground Support Sleeve Block for F34 Truss Segment Systems

SKU: XT-BLOCK-MK2



### Top Truss Section for Electric Motor or Manual Chain Hoist

SKU: XT-TOPCM



### Pair 1 Ton Manual Chain Hoist with 30 Ft (9 M) Chain for Stage Truss roof system and line array speakers

SKU: XT-MCH1TX2-30FT



### Nylon Chain Hoist Bag with Hanging Straps fits up to 30' Ft Chains

SKU: XT-MCH-BAG

