



Home > Products > ProX Truss > Couplers, Spacers, and Hardware > Spacers > Spacer 105mm Female Coupler

SKU: XT-SPFF105

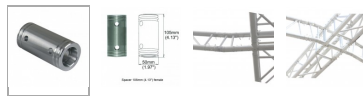
Permalink:

[Search on Google](#)

Spacer 105mm Female Coupler

[Find A Dealer](#)

Product Images



[Download Product Images](#)

Our Products And You

[Submit your story](#)

ProX XT-SPFF105 Spacer 105mm Female Coupler

Description

This XT-SPFF105 Spacer Female to Female Coupler is designed to securely connect truss corners.

2" Truss Spacer Female to Female 105mm 4.1"

105mm 4.1" X 50mm 2"

ProX offers a wide array of small to medium temporary roof solutions to suit all types of outdoor events! Custom temporary roof projects are a specialty of the ProX Engineering Department, which focuses on safety and stability of its designs.

Dimensions:

L:210 x B:50 x H:50 mm

Weight:

0.72 kg

Suggested Shipping Method: Parcel

UPC

019372406518

Our Products and You

[Submit your story](#)

Commonly Asked Questions

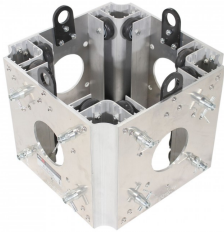
+ Where can I buy one?

[submit a question](#)

Customer Testimonials

What did you think

Related Products



Ground Support Sleeve Block for F34 Truss Segment Systems

SKU: XT-BLOCK-MK2



6 Way Square Truss Junction Block - Includes 4 Way 16 Half Conical Couplers

SKU: XT-JB6W-4W



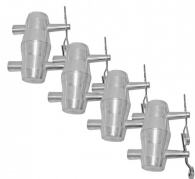
4.92 Ft - 1.50 M F34 Square Truss Segment | 2 mm Wall

SKU: XT-SQ492



Connector and Safety Pins Sets (12) Package

SKU: XT-SPX12



Set of (4) Double Sided Conical Couplers with connectors and pins

SKU: XT-CP-PAC3 Pack