



Home > Products > ProX Truss > Ground Support > Top Sections > Top Truss Section for Electric Motor or Manual Chain Hoist

SKU: XT-TOPCM

Permalink:

[Search on Google](#)

Top Truss Section for Electric Motor or Manual Chain Hoist

[Find A Dealer](#)

Product Images



[Download Product Images](#)

Our Products And You

Submit your
story

ProX XT-TOPCM Top Truss Section for Electric Motor or Manual Chain Hoist

Description

The **ProX XT-TOPCM** Top Section fits F34 Series 12" and is designed for Electric Motor or Manual Chain Hoist up to 1 tons.

ProX Truss has the most trusted staging support systems in the industry and is built to the highest standards of safety and performance. It's a rugged yet lightweight trussing solution perfect for mobile DJs, bands, outdoor performances, nightclubs, live mobile productions, or permanent installations.

XT-SQ SERIES DIMENSIONS:

- Height: 11.42in / 290mm
- Width: 11.42in / 290mm
- Weight: 21lb per 3.28 ft / 9,5kg per meter
- Main Tube: 2in / 50mm
- Wall Thickness: .08in / 2mm
- Braces: .75in / 20mm

Includes connecting hardware set.

ProX Truss products utilize industry-standard dimensions to be compatible to connect to/with many other manufacturers trussing.

COUPLER'S AND PINS ARE NOT INCLUDED W/ XT-TOPCM

Features

Features

- **Manufactured in our Own Factory!**
- **Material: 10mm EN-AWT6 6082 Aluminum**
- **Includes padded fabric storage and carrying bag**
- **TUV Certified Manufacturing**
- **Fits most manufacturers with F34 Conical Couplers**

TUV Is a 3rd Party Certification Body and a Nationally Recognized Testing Laboratory (NRTL). TUV provides inspections, testing, certification & training, with the ultimate objectives of reliability, safety & high quality.

Exterior Dimensions & Weight

11.50"H x 9.50"W x 24.00"L - Weight: 26.40 lbs

Shipping Dimensions & Weight

Box 1 of 1: 12.00"H x 10.00"W x 25.00"L - Shipping Weight: 28.00 lbs

Suggested Shipping Method: Parcel

UPC

019372406341

Our Products and You

Submit your
story

Commonly Asked Questions

+ Where can I buy one?

[submit a question](#)

Customer Testimonials

What did you think

Related Products

3.28 Ft - 1.00 M F34 Square Truss Segment | 2 mm Wall

SKU: XT-SQ328



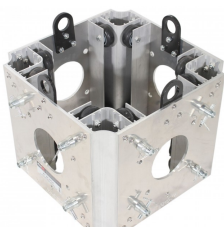
Pair 1 Ton Manual Chain Hoist with 30 Ft (9 M) Chain for Stage Truss roof system and line array speakers

SKU: XT-MCH1TX2-30FT



Ground Support Sleeve Block for F34 Truss Segment Systems

SKU: XT-BLOCK-MK2





Conical Tube Ground Support Post towers Male to Male Hinge Joint Fits F31 F32 F34

SKU: XT-HINGE



Single 3 Ft. Outrigger Support Brace for Leveling Ground Support Truss Tower Base

SKU: XT-GSOUTS3
