



Home > Products > ProX Truss > Modular Rapid U Grid > Truss Modular 6X Rapid U Grid Trio Package for Lighting - Moving Heads W-Rolling Aluminum Baseplate

SKU: XT-GRU-PKGX6

Permalink: <http://www.proxdir.com/xt-gru-pkgx6>

[Search on Google](#)

Truss Modular 6X Rapid U Grid Trio Package for Lighting - Moving Heads W-Rolling Aluminum Baseplate

[Find A Dealer](#)

Product Images



[Download Product Images](#)

Our Products And You

Submit your
story

ProX XT-GRU-PKGX6 Truss Modular 6X Rapid U Grid Trio Package for Lighting - Moving Heads W-Rolling Aluminum Baseplate

Description

The **ProX XT-GRU-PKGX6** makes building a modular lighting grid for moving heads or other entertainment lighting, that is expandable up to 10U modules is easy to achieve with the XT-GRU-PKGX6. The ProX grid package includes the beginning parts needed to mount move and store moving head fixtures for stages or performance areas.

The XT-GRU3024 grid units allow for grid configurations tailored to your needs. You can hang up to 10 grids beneath each other for custom layouts. The hanging frames are built from durable EN-AWT6 6082 aluminum frames and each grid will fit small to medium-sized moving-head lights. The rolling baseplate is constructed from 10mm AWT6 6082 Aluminum Plate with handle cutouts and multiple drilled stud mounting holes for versatility. The baseplate is designed to work with the XT-GRU3024 grid units but can also be configured to work with F34 trussing products as well. The baseplate casters allow for easy moving of the XT-GRU-PKGX6 from the truck to venue to stage with minimal effort and protection for your lighting devices.

The XT-GRU3024 Rapid Grid™ modular design allows endless configurations for single fixtures, double hanging or ladders of multiple fixtures, which can also be expanded to create a wall of hanging positions. Each U module has two safety point attachments, one on each side for use with multiple styles of fixtures. The **ProX GRU Rapid Grid™ System** has been designed for quick deployment and takedown in any environment. The lightweight yet strong aluminum construction is additionally reinforced to provide added stability and safety.

Easily expand the configurations of the ProX GRU Rapid Grid™ System by utilizing the standard ProX Truss F31 selection of single tube 2" pipes, T sections, spigots, or corner adapters. These products all will fit into the GRU system which allows you to create hanging structures in an unlimited amount of designs for lighting utility.

ProX Truss products utilize industry standard dimensions to be compatible to connect to/with many other manufacturers trussing products with conical connectors. All third-party products shown are not included or being advertised for the distribution or sales. For display purposes only.

Features

Download the [ProX Truss/Rigging Safety Guide](#)

- Based on the XT-GRU3024 Rapid Grid™ Unit
- Single Grid Dimensions: 23.6" x 29.6" x 2" Tube O.D.
- Load Capacity up to 110 lbs. Per Segment
- 3 U Segment W/Hangar Weight: 18 lbs. (Less baseplate)

- **Manufactured in our Own Factory!**
- **Material: EN-AWT6 6082 Aluminum**
- **0.08" (2mm) Wall Thickness**
- **TUV Certified Aluminium Welding**
- **Includes Connecting Hardware**



TUV Is a 3rd Party Certification Body and a Nationally Recognized Testing Laboratory (NRTL). TUV provides inspections, testing, certification & training, with the ultimate objectives of reliability, safety & high quality.

Package Contents

- [XT-GRTOP24](#) (2) 24" Width Module Top Bar for ProX XT-GRU Rapid Grid Modular System
- [XT-GRU3024](#) (6) 30 x 24 in. U Shape Module for ProX XT-GRU Rapid Grid Modular System
- [XT-BP2430W](#) (1) 24 x 30 in. Module Base Plate with Locking Casters for ProX XT-GRU Rapid Grid Modular System
- [XT-GRU-ARM](#) (1) 24" Truss Tube with Dual Clamp for ProX XT-GRU Rapid Grid Modular System

Exterior Dimensions & Weight

XT-BP2430W (1): 6.00"H x 24.00"W x 37.00"L - Weight: 38.00 lbs

Shipping Dimensions & Weight

Box 1 of 4: XT-GRU-ARM 3.00"H x 24.00"W x 5.00"L - Shipping Weight: 4.00 lbs

Box 2 of 4: XT-BP2430W 7.00"H x 25.00"W x 38.00"L - Shipping Weight: 40.00 lbs

Box 3 of 4: XT-GRU3024 (6 boxes) 6.00"H x 25.00"W x 32.00"L - Shipping Weight: 23.00 lbs

Box 4 of 4: XT-GRTOP24 (2 boxes) 3.00"H x 24.00"W x 5.00"L - Shipping Weight: 5.00 lbs

Suggested Shipping Method: Parcel

UPC

804589619895

Our Products and You

Submit your story

Commonly Asked Questions

+ Where can I buy one?

[submit a question](#)

Customer Testimonials

What did you think

Related Products

[24" Width Module Top Bar for ProX XT-GRU Rapid Grid Modular System](#)

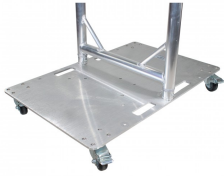
SKU: XT-GRTOP24



[30 x 24 in. U Shape Module for ProX XT-GRU Rapid Grid Modular System](#)

SKU: XT-GRU3024





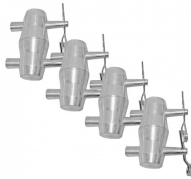
24 x 30 in. Module Base Plate with Locking Casters for ProX XT-GRU Rapid Grid Modular System

SKU: XT-BP2430W



XT-SJB-2W Single Junction Box Includes 2 Sided Connecting Hardware for F34 F33 F32 F31 Truss

SKU: XT-SJB-2W



Set of (4) Double Sided Conical Couplers with connectors and pins

SKU: XT-CP-PAC3 Pack

Show More
