

**Our office is closed on Monday April 29th & Tuesday April 30th for Passover**



Home > Products > ProX Truss > Ground Support > > Truss Tower Stage Roofing System Package -Top Block | Hinges | Base | Outriggers and 3.28 Ft. 2 mm Wall Truss Segment

SKU: XTP-GSBPACK3

Permalink:

[Search on Google](#)

## Truss Tower Stage Roofing System Package -Top Block | Hinges | Base | Outriggers and 3.28 Ft. 2 mm Wall Truss Segment

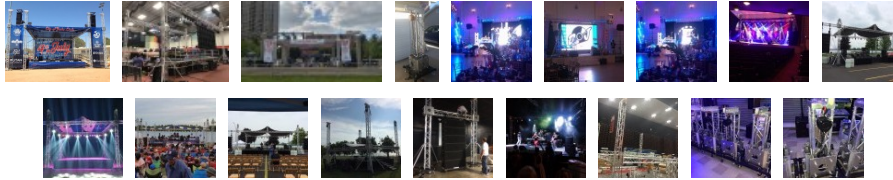
[Find A Dealer](#)

### Product Images



[Download Product Images](#)

### Our Products And You



[submit your story](#)

### ProX XTP-GSBPACK3 Truss Tower Stage Roofing System Package -Top Block, Hinges, Base | Outriggers and a 3.28 Ft. 2 mm Wall Truss Segment

#### Description

The **ProX XTP-GSBPACK3** is a Full Package of four-legged outrigger Truss base, with a 4-way Square Truss junction box Sleeve Block, on a 3' long square Truss. Complete with the Rigging Top. In this package, you have everything you need **(except for lift hoist)** for one complete leg in the building and flying a large scale truss, supporting mid to heavy-grade level stage installations. You get:

- [XT-GSB MK2](#) Rigger Base, with extending legs
- [XT-SQ328](#) 3.28 Ft Truss Segment (Longer segments available separately)
- [XT-GSOUT3](#) 3' Outrigger Brace Tubes (4) with clamps
- [XT-BLOCK](#) Sleeve Block 4-Way Junction box
- [XT-TOPCM](#) Truss Top with I-Beam mount with chain Pulley wheels
- [XT-HINGE](#) 4 Hinge block set
- **(Lift Hoist NOT included)**

ProX XT-SQ series trussing is a rugged and durable trussing solution perfect for live outdoor or indoor productions, exhibitions, retail displays as well as nightclubs, and other permanent installations. ProX offers a wide variety of corners, base plates, connectors and accessories that allow limitless design configurations to suit your needs. Always consult an engineer for complex designs!

#### ProX XT-SQF34 2MM SERIES DIMENSIONS:

- Height: 11.42in / 290mm
- Width: 11.42in / 290mm
- Weight: 21lb/9,5kg per 3.28 ft / 1 meter
- Main Tube: 2in / 50mm
- Wall Thickness: .08in / 2mm
- Braces: .75in / 20mm

**IMPORTANT:** Always know your load weight for your equipment: [XT-SQ Truss Loading Chart](#)

---

## Features

- **Manufactured to Exacting Specifications in our Own Factory!**
- **Tolerance Free Standard Conical Connectors**
- **Truss Main Tube Wall Thickness of .08in / 2mm**
- **Load Capacity is 1 Ton (2000 lbs) per unit**
- **Material: EN-AWT6 6082 Aluminum and Welded Steel (Painted Black)**
- **TUV Certified Aluminium/Steel Welding**



TUV is a 3rd Party Certification Body and a Nationally Recognized Testing Laboratory (NRTL). TUV provides inspections, testing, certification & training, with the ultimate objectives of reliability, safety & high quality.

**ProX Truss products utilize industry-standard dimensions to be compatible to connect to/ and work with many other manufacturers' F34 trussing products with conical connectors.**

---

## Package Contents

- [XT-TOPCM](#) (1) Top Truss Section for Electric Motor or Manual Chain Hoist
  - [XT-BLOCK-MK2](#) (1) Ground Support Sleeve Block for F34 Truss Segment Systems
  - [XT-HINGE](#) (4) Conical Tube Ground Support Post towers Male to Male Hinge Joint Fits F31 F32 F34
  - [XT-GSB MK3](#) (1) Universal Vertical Tower Truss Ground Support Base on Wheels with Leveling Jacks for F34, F44 and 12" Bolt truss
  - [XT-GSOUTS3](#) (4) Single 3 Ft. Outrigger Support Brace for Leveling Ground Support Truss Tower Base
  - [XT-SQ328](#) (1) 3.28 Ft - 1.00 M F34 Square Truss Segment | 2 mm Wall
- 

## Exterior Dimensions & Weight

**XT-SQ328 (1):** 39.36"H x 11.42"W x 11.42"L - Weight: 19.00 lbs

**XT-GSOUTS3 (4):** 64.00"H x 2.00"W x 37.50"L - Weight: 29.00 lbs

**XT-BLOCK-MK2 (1):** 18.50"H x 22.50"W x 22.50"L - Weight: 77.30 lbs

**XT-TOPCM (1):** 11.50"H x 9.50"W x 24.00"L - Weight: 26.40 lbs

## Shipping Dimensions & Weight

**Box 1 of 6:** XT-SQ328 41.50"H x 12.50"W x 12.50"L - Shipping Weight: 21.00 lbs

**Box 2 of 6:** XT-GSOUTS3 (4 boxes) 6.00"H x 8.00"W x 64.00"L - Shipping Weight: 34.00 lbs

**Box 3 of 6:** XT-GSB MK3 9.00"H x 29.00"W x 29.00"L - Shipping Weight: 70.00 lbs

**Box 4 of 6:** XT-HINGE (4 boxes) 2.00"H x 5.00"W x 5.00"L - Shipping Weight: 2.50 lbs

**Box 5 of 6:** XT-BLOCK-MK2 20.00"H x 24.00"W x 24.00"L - Shipping Weight: 80.00 lbs

**Box 6 of 6:** XT-TOPCM 12.00"H x 10.00"W x 25.00"L - Shipping Weight: 28.00 lbs

## Suggested Shipping Method: LTL

1 Set: 285 LBS 48x40x60

2 Set: 505 LBS 48x40x60

## UPC

019372410836

---

## Our Products and You

Submit your  
story

## Commonly Asked Questions

+ Where can I buy one?

[submit a question](#)

---

## Customer Testimonials

What did you think

---

## Related Products

---



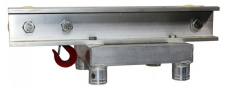
### [Truss Tower Stage Roofing System Package](#)

SKU: XTP-GSBPACK164



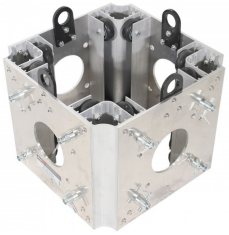
### [PRO Truss Tower Stage Lift System Package -Top Block | Hinges | Base | Outriggers and 3.28 Ft. 3 mm Ladder Truss Segment](#)

SKU: XTP-GSBPACK3 PRO



### [Top Truss Section for Electric Motor or Manual Chain Hoist](#)

SKU: XT-TOPCM



### [Ground Support Sleeve Block for F34 Truss Segment Systems](#)

SKU: XT-BLOCK-MK2



### [Single 3 Ft. Outrigger Support Brace for Leveling Ground Support Truss Tower Base](#)

SKU: XT-GSOUTS3

[Show More](#)

---