



Home > Products > ProX Cases > Mixer Console Cases > Universal 19" Rackmount Mixer up to 13U W-Removable Laptop Shelf

SKU: XS-19MIX13ULT

Permalink:

[Search on Google](#)

Universal 19" Rackmount Mixer up to 13U W-Removable Laptop Shelf

[Find A Dealer](#)

Product Images



[Download Product Images](#)

Our Products And You

[Submit your story](#)

ProX XS-19MIX13ULT Universal 19" Rackmount Mixer up to 13U W/Removable Laptop Shelf

Description

The **ProX XS-19MIX13U-LT** allows you to safely house your mixer, and offers a clean look! This 13U 19 inch Slant ATA 300 rack mount case is perfect for the mobile sound engineer. If you need protection for your investment, then look no further. The sliding laptop shelf saves table space, and gives the best access to all of your gear. The removable cable access cover allows you to lock the case while keeping your gear connected, and offers a clean look. Comes with rack screws.

This **ProX ATA 300 Style Flight Case** is manufactured with the **Honeycomb Digital™** laminated surface design on 3/8" plywood. Made with the super-sleek look of Honeycomb Digital™ hexagon grids on all shell surfaces, which gives the cases an almost alien look! Also as opposed to regular laminated plywood cases from other manufacturers, the ProX Honeycomb Digital™ design helps prevent minor to mild scratches. The Honeycomb Digital™ line design was inspired in 2009 by the design of New York City Street Manhole covers which are made to handle rough and tough everyday punishment.

All ProX cases use CNC technology, during the manufacturing process, to assure that cases are consistently built with strict specifications and tolerances that are required for the high-quality standards that ProX cases have been known for since 1984.

Note: Any pictured device is shown for reference only and not included!

For your safety, and the safety of your equipment, do not attempt to transport or move with any gear stored on a sliding shelf or side shelf and be aware that the sliding shelf can be removed when slid out to its furthest point.

Features

ProX has been manufacturing quality flight/road cases since 1984 and all are designed to protect your investment!

- **ATA-300 Style Flight/Road Case**
- **13U 19" Slant Rack Mount**
- **Rack Mounting Screws Included**
- **Removable Sliding Laptop Shelf**
- **Four Industrial Grade Rubber Feet**
- **ProX Standard Silver on Black Design**
- **Signature Honeycomb Digital™ Laminated 3/8" Plywood**
- ***High-density Foam Interior Support & Casing**
- **ProX Branded Spring Action Rubber Grip Recessed Handles**
- **Easy Locking Fit Aluminum Tongue and Groove**

- **Cable Access Hole with Removable Emblem Cover**
- **ProX Live Performance Gear® Limited Lifetime Warranty**
- **ProX Heavy and Powerful Steel Ball Corners & Dual Anchor Rivets**
- **ProX Branded Industrial Recessed Butterfly Twist-Lock Latches - Padlock Ready**

* **ProX Goes Green:** The durable hard rubber foams used in our cases contain 85% recycled content. Of that 70%, 80% of it comes from recycled plastic bottles and the remaining percentage from recycled post-industrial material. At ProX we strive to make the world a better place!

To Fit

Any trademarks, trade names or brand names appearing herein that do not belong to ProX are the property of their respective owners and/or companies, and such appearance doesn't and shall not constitute or imply endorsement, sponsorship or recommendation by ProX.

Allen & Heath

- (1) MixWizard WZ4 12:2 • [View all products for Allen & Heath MixWizard WZ4 12:2](#)
- (1) MixWizard WZ4 16:2 • [View all products for Allen & Heath MixWizard WZ4 16:2](#)
- (1) **QU-16** • Mounting Rack Rails required • [View all products for Allen & Heath QU-16](#)
- (1) WZ16:2 • [View all products for Allen & Heath WZ16:2](#)
- (1) WZ4 16:2 • [View all products for Allen & Heath WZ4 16:2](#)
- (1) ZED-16FX • [View all products for Allen & Heath ZED-16FX](#)
- (1) ZED-18 • [View all products for Allen & Heath ZED-18](#)

Behringer

- (1) XL1600 • [View all products for Behringer XL1600](#)
- (1) X32 Producer • [View all products for Behringer X32 Producer](#)

Mackie

- (1) 1604-VLZ PRO • [View all products for Mackie 1604-VLZ PRO](#)
- (1) 1604-VLZ3 • [View all products for Mackie 1604-VLZ3](#)

Soundcraft

- (1) GB2R • [View all products for Soundcraft GB2R](#)

Yamaha

- (1) EMX5000-12 • [View all products for Yamaha EMX5000-12](#)
- (1) EMX5016CF • [View all products for Yamaha EMX5016CF](#)
- (1) MG166CX • [View all products for Yamaha MG166CX](#)
- (1) MG206C • [View all products for Yamaha MG206C](#)

Exterior Dimensions & Weight

12.50"H x 22.00"W x 28.00"L - Weight: 44.60 lbs

Shipping Dimensions & Weight

Box 1 of 1: 14.00"H x 23.50"W x 28.50"L - Shipping Weight: 50.50 lbs

Suggested Shipping Method: Parcel

UPC

741459148324

Our Products and You

Submit your story

Commonly Asked Questions

- + Where can I buy one?
- + Does the equipment shown in the photo come with the case?

[submit a question](#)

Customer Testimonials

What did you think

Related Products



10U Top Mount 19" Slanted Mixer Case

SKU: XS-19MIXLT



8U Top Mount Slanted Flight Case for 19 inch Mixers

SKU: XS-19MIX8U



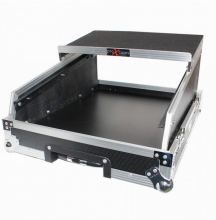
10U Top Mount 19" Slanted Black on Black Mixer Case

SKU: XS-19MIXLTBL



Universal 19" Rackmount Mixer up to 13U W-Removable Laptop Shelf

SKU: XS-19MIX13ULT



19" Mixer Case W-14U Top Mount for 16 Channel Mixer

SKU: XS-19MIX14ULTHW
