

Our office is closed on Monday April 29th & Tuesday April 30th for Passover



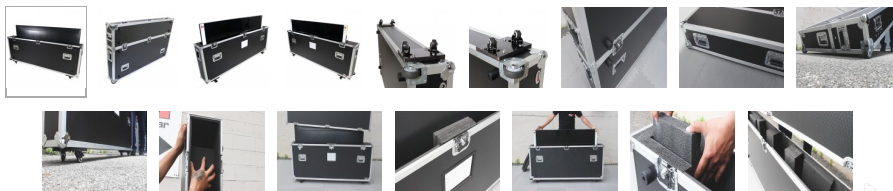
Home > Products > ProX Cases > Flat Panel LED TV Cases > Universal Case for ONE 60 to 70 Inch Flat Panel Monitor LED TV w/ Low Profile Wheels

SKU: XS-TV6070W

This product is discontinued

Universal Case for ONE 60 to 70 Inch Flat Panel Monitor LED TV w/ Low Profile Wheels

Product Images



[Download Product Images](#)

Our Products And You

Submit your
story

ProX XS-TV6070W Universal Case for ONE 60 to 70 Inch Flat Panel Monitor LED TV w/ Low Profile Wheels

Description

Discontinued, Replaced with [XS-TV5570W](http://www.proxdirect.com/products/view/1313) <http://www.proxdirect.com/products/view/1313>

The **ProX XS-TV6070W** Fits 1 LED/LCD TV - 60"-70" Adjustable Case with Low profile wheels. If you have a passion for your gear and want to keep it safe at all times, this case will perform at the highest level every time. The XS-TV6070W is constructed with our rugged Signature 3/8" Gig-Ready Series Plywood, durable rubber wheels, reinforced steel ball corners, as well as recessed steel padded handles and latches.

What size does it fit exactly?

This case supports multiple sized TV's up to 70" Models 62"W x 36"H.

This ProX **ATA 300 Case** is manufactured with the **Honeycomb Digital™** Protective Finish on Laminated 3/8" plywood. Made with the super-sleek look of Honeycomb Digital™ hexagon grids on all shell surfaces, sets ProX apart from other manufacturers. The Honeycomb Digital™ design helps prevent minor to mild scratches. This unique design was inspired in 2009 by the design of New York City Street Manhole covers which are made to handle rough and tough everyday punishment.

All ProX cases use CNC technology, during the manufacturing process, to assure that cases are consistently built with strict specifications and tolerances that are required for the high-quality standards that ProX cases have been known for since 1984.

Note: Any pictured device is shown for reference only and not included!

Features

- **Standard Style, Silver on Black Honeycomb Digital™ Protective Finish**
- **ATA-300 Style Gig Ready Flight Road Case**
- **Easy locking fit and tongue**
- **High-density foam interior support & casing**
- **Recessed spring action Handles per Side**

• **Reinforced reinforced steel ball corners**

- **heavy and powerfull steel ball corners**
- **Dual anchor rivets**
- **Signature Series Certified Laminated Gig ready 3/8" plywood**
- **Industrial Recessed butterfly twist lock latches that can be padlocked**
- **Comes with 2 Heavy Duty 2" low profile Durable Rubber Caster Wheels for Mobility**
- **ProX Limited Lifetime Warranty**

* **ProX Goes Green:** The durable hard rubber foams used in our cases contain 85% recycled content. Of that 70%, 80% of it comes from recycled plastic bottles and the remaining percentage from recycled post-industrial material. At ProX we strive to make the world a better place!

Exterior Dimensions & Weight

39.50"H x 9.50"W x 68.00"L - Weight: 75.00 lbs

Shipping Dimensions & Weight

Box 1 of 1: 41.00"H x 11.00"W x 70.00"L - Shipping Weight: 89.00 lbs

Suggested Shipping Method: LTL

UPC

019372413059

Our Products and You

Submit your
story

Commonly Asked Questions

+ Where can I buy one?

+ Does the equipment shown in the photo come with the case?

[submit a question](#)

Customer Testimonials

What did you think
