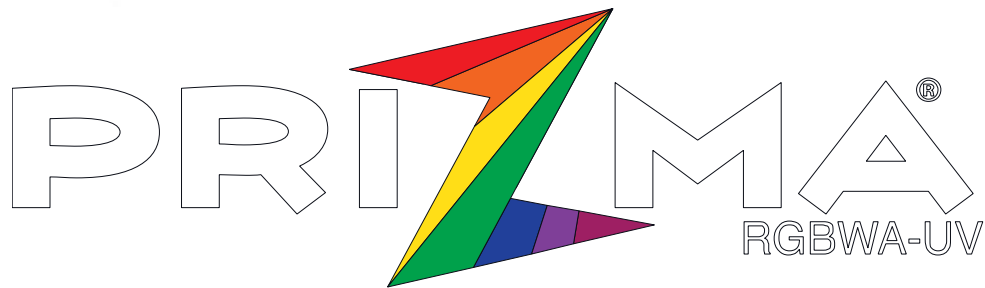
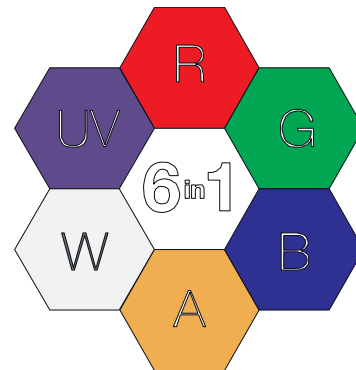


# ProX<sup>®</sup>

Live Performance Gear



## User Manual



ULTRABRIGHT LED



## NOTICE:

©2018 Xstatic Pro, Inc. All rights reserved. ProX Lighting believes that the information contained in this manual is accurate in all respects. However Information, specifications, diagrams, images, and instructions herein are subject to change without notice. ProX Lighting logo and identifying product names and numbers herein are trademarks of Xstatic Pro, Inc. Copyright protection claimed includes all forms and matters of copyrightable materials and information now allowed by statutory or judicial law or hereinafter granted. Product names used in this document may be trademarks or registered trademarks of their respective companies and are hereby acknowledged. All non- ProX Lighting brands and product names are trademarks or registered trademarks of their respective companies.

**Xstatic Pro, Inc. and all affiliated companies hereby disclaim any and all liabilities for property, equipment, building, and electrical damages, injuries to any persons, and direct or indirect economic loss associated with the use or reliance of any information contained within this document, and/or as a result of the improper, unsafe, insufficient and negligent assembly, installation, rigging, and operation of this product.**

## SAFETY NOTES:

1. Please read these instructions carefully.
2. Keep all information and instructions in a safe place.
3. Follow the instructions.
4. Observe all safety warnings. Never remove safety warnings or other information from the equipment.
5. Use the equipment only in the intended manner and for the intended purpose.
6. Use only sufficiently stable and compatible stands and/or mounts (for fixed installations). Make certain that wall mounts are properly installed and secured. Make certain that the equipment is installed securely and cannot fall down.
7. During installation, observe the applicable safety regulations for your jurisdiction.
8. Never install and operate the equipment near radiators, heat registers, ovens or other sources of heat. Make certain that the equipment is always installed so that is cooled sufficiently and cannot overheat.
9. Never place sources of ignition, e.g., burning candles, on the equipment.
10. Ventilation slits must not be blocked.
11. Do not use this equipment in the immediate vicinity of water (does not apply to special outdoor equipment - in this case, observe the special instructions noted below. Do not expose this equipment to flammable materials, fluids or gases.
12. Make certain that dripping or splashed water cannot enter the equipment. Do not place containers filled with liquids, such as vases or drinking vessels, on or near the equipment.
13. Make certain that objects cannot fall into or upon the device.
14. Use this equipment only with the accessories recommended and intended by the manufacturer.
15. Do not open or modify this equipment.
16. After connecting the equipment, check all cables in order to prevent damage or accidents, e.g., due to tripping hazards.
17. During transport, make certain that the equipment cannot fall down and possibly cause property damage and personal injuries.
18. If your equipment is no longer functioning properly, if fluids or objects have gotten inside the equipment or if it has been damaged in any other way, switch it off immediately and unplug it from the mains outlet (if it is a powered device). This equipment may only be repaired by ProX authorized & qualified personnel.
19. Clean the equipment using a dry cloth.
20. Comply with all applicable disposal laws in your country. During disposal of packaging, please separate plastic and paper/cardboard. Plastic bags must be kept out of reach of children.

## FOR AC POWERED EQUIPMENT:

21. **CAUTION:** If the power cord of the device is equipped with a grounding plug, then it must be connected to an outlet with a protective ground. Never deactivate the protective ground of a power cord.
22. If the equipment has been exposed to strong fluctuations in temperature (for example, after transport), do not switch it on immediately. Moisture and condensation could damage the equipment. Do not switch on the equipment until it has reached room temperature.
23. Before connecting the equipment to the power outlet, first verify that the voltage and frequency match the values specified on the equipment. If the equipment has a voltage selection switch, connect the equipment to the power outlet only if the equipment values and the power values match. If the included power cord or power adapter does not fit in your wall outlet, contact an electrician.
24. Do not step on the power cord. Make certain that the power cable does not become kinked, especially at the outlet and/or power adapter and the equipment connector.
25. When connecting the equipment, make certain that the power cord or power adapter is always freely accessible. Always disconnect the equipment from the power supply if the equipment is not in use or if you want to clean the equipment. Always unplug the power cord and power adapter from the power outlet at the plug or adapter and not by pulling on the cord. Never touch the power cord and power adapter with wet hands.
26. Whenever possible, avoid switching the equipment on and off in quick succession because otherwise this can shorten the useful life of the equipment.
27. **IMPORTANT INFORMATION:** Replace fuses only with fuses of the same type and rating. If a fuse blows repeatedly, please contact an authorized service center.
28. To disconnect the equipment from the power completely, unplug the power cord or power adapter from the power outlet.
29. If your device is equipped with a Powercon power connector, the mating Powercon equipment connector must be unlocked before it can be removed. However, this also means that the equipment can slide and fall down if the power cable is pulled, which can lead to personal injuries and/or other damage. For this reason, always be careful when laying cables.
30. Unplug the power cord and power adapter from the power outlet if there is a risk of a lightning strike or before extended periods of not using.

## CAUTION:

Never remove the cover, because otherwise there may be a risk of electric shock. There are no user serviceable parts inside. Have repairs carried out only by qualified service personnel.



The lightning flash with arrowhead symbol within an equilateral triangle is intended to alert the user to the presence of uninsulated “dangerous voltage” within the product’s enclosure that may be of sufficient magnitude to constitute a risk of electrical shock.



The exclamation mark within an equilateral triangle is intended to alert the user to the presence of important operating and maintenance instructions.

## CAUTION! IMPORTANT INFORMATION ABOUT LIGHTING PRODUCTS

1. Do not look into the beam from a distance of less than 18 inches.
2. Do not stare into the beam for extended periods at short-to-medium distances.
3. Do not view the beam directly with optical instruments such as magnifiers.
4. Under some circumstances, stroboscopic effects may trigger epileptic seizures in sensitive individuals! For this reason, persons who suffer from epilepsy should always avoid places with strobe lights.
5. The product has been developed for professional use in the field of event technology and is not suitable as household lighting.

## PRODUCT INTRODUCTION:

### PROX X-PRIZMA12 RGBWAUV - 12 x 12 W 6-in-1 LED RGBWA+UV PAR PROJECTOR

#### CONTROL FUNCTIONS:

- DMX 512 – 1 channel, 6-channel and 10-channel DMX control
- Red, green, blue, white, amber and UV separately controllable

#### FEATURES:

- 12 X 12 W 6-in-1 LEDs
- Aluminum die-cast housing
- RGB color spectrum + white + amber + UV
- Produces 32 million colors
- 25° Beam angle
- 35° Field angle
- Refresh rate 3000 Hz
- Power consumption 55 W
- Operating voltage 100V - 240 V AC
- Lit multifunctional LC display
- Adjustable double bracket
- Sound active music control via built-in microphone
- Master/slave mode
- Color change rate and strobe effect controllable via control panel and DMX
- IR Remote
- Power linkable
- Auto mode

#### CONTROLS AND INDICATORS:

##### DMX IN

3-pin XLR socket for connection of a DMX controller (e.g., DMX mixer).

##### DMX OUT

3-pin XLR socket for looping through the DMX control signal.

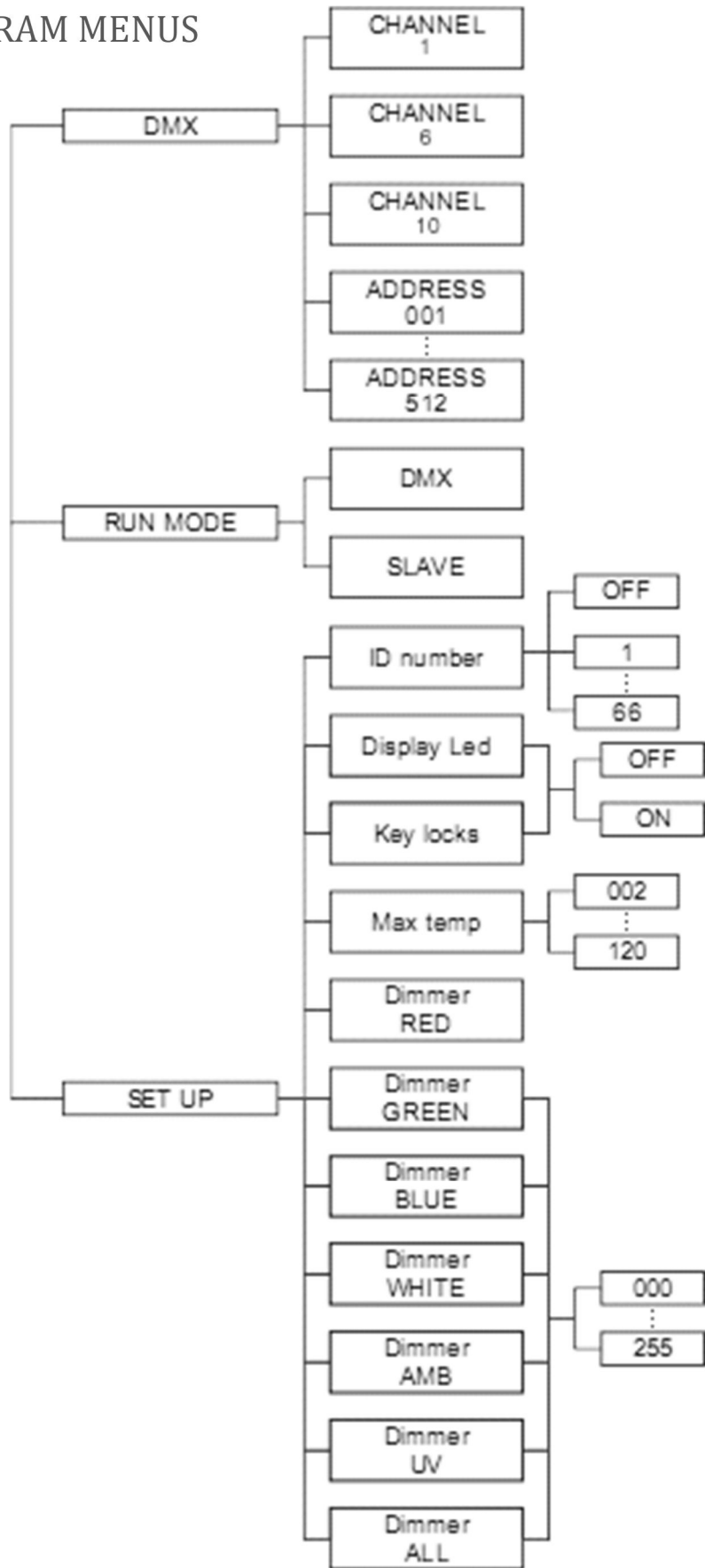
##### POWER IN

IEC power input socket. Operating voltage 100 - 240 V AC / 50 - 60 Hz. Connection via the supplied IEC power cord.

##### POWER OUT

Edison power output socket. Operating voltage 100 - 240 V AC / 50 - 60 Hz.

# DMX PROGRAM MENUS



# DMX CHANNELS

## 1.DMX 1 channel

channel	DMX value	fuction
ch1	0-3	off
	4-9	RGBWAUV
	10-14	RED
	15-19	GREEN
	20-24	BLUE
	25-29	WHITE
	30-34	AMBER
	35-39	UV
	40-44	Macro Color 1
	45-49	Macro Color 2
	50-54	Macro Color 3
	55-59	Macro Color 4
	60-64	Macro Color 5
	65-69	Macro Color 6
	70-74	Macro Color 7
	75-79	Macro Color 8
	80-84	Macro Color 9
	85-89	Macro Color 10
	90-94	Macro Color 11
	95-99	Macro Color 12
	100-104	Macro Color 13
	105-109	Macro Color 14
	110-114	Macro Color 15
	115-119	Macro Color 16
	120-124	Macro Color 17
	125-129	Macro Color 18
	130-134	Macro Color 19
	135-139	Macro Color 20
	140-144	Macro Color 21
	145-149	Macro Color 22
	150-154	Macro Color 23
	155-159	Macro Color 24
	160-164	Macro Color 25
	165-169	Macro Color 26
	170-174	Macro Color 27
	175-179	Macro Color 28
	180-184	Macro Color 29
	185-189	Macro Color 30
	190-194	Macro Color 31
	195-199	Macro Color 32
	200-204	Macro Color 33
	205-209	Macro Color 34
	210-214	Macro Color 35
215-219	Macro Color 36	
220-224	Macro Color 37	
225-229	Macro Color 38	
230-234	Macro Color 39	
235-239	Macro Color 40	
240-244	Macro Color 41	
245-249	Macro Color 42	
250-255	Macro Color 43	

## 2.DMX 6 channel

channel	DMX value	fuction
ch1	0-255	Red(0%--100%)
ch2	0-255	Green(0%--100%)
ch3	0-255	Blue(0%--100%)
ch4	0-255	White(0%--100%)
ch5	0-255	Amber(0%--100%)
ch6	0-255	UV(0%--100%)

## 3.DMX 10 channel

channel	DMX value	fuction
ch1	0-255	Master Dimmer
ch2	0-50	Dimmer Speed off
	51-101	Dimmer Speed 1
	102-152	Dimmer Speed 2
	153-203	Dimmer Speed 3
	204-255	Dimmer Speed 4
ch3	0-19	off
	20-39	Auto 1
	40-59	Auto 2
	60-79	Auto 3
	80-99	Auto 4
	100-120	Auto 5
	121-139	Auto 6
	140-159	Auto 7
	160-180	Auto 8
	181-199	Sound 1
200-219	Sound 2	
220-255	Sound 3	
ch4	0-255	Speed&Strobe
ch5	0-255	Red(0%--100%)
ch6	0-255	Green(0%--100%)
ch7	0-255	Blue(0%--100%)
ch8	0-255	White(0%--100%)
ch9	0-255	Amber(0%--100%)
ch10	0-255	UV(0%--100%)

# OPERATIONS MENU

1ST Level menu	2nd level menu	3rd level menu
<b>ADDR</b>	XXX. (DMX : 001~512)	
<b>CHND</b>	CHND 1CH	
	CHND 6CH	
	CHND 10CH	
<b>STAT</b>	STAT R ( 000 - 255 )	
	STAT G ( 000 - 255 )	
	STAT B ( 000 - 255 )	
	STAT W ( 000 - 255 )	
	STAT A ( 000 - 255 )	
	STAT UV ( 000 - 255 )	
	STAT ST ( 000 - 255 )	
<b>COLO</b>	COLO CO : 000-063	
<b>AUTO</b>	AUTO At : 001- 009	At.X SP : 001-009
<b>SOUND</b>	SOUND No.1	SOUNDX SENS 0-9
	SOUND No.2	
	SOUND No.3	

## OPERATIONS MENU, CONTINUED

<b>REMO</b>	REMO ON	
	REMO OFF	
<b>REST</b>	REST ...	
<b>INFO</b>	DISP	DISP ON
		DISP OFF
	TEMP. XX.X°C	
	TIME. 0000H	
<b>SLAV</b>	SLAV. OK	

## DISPLAY INSTRUCTIONS

### SETUP MENU:

You can easily setup and control your PRIZMA from the on-board screen. Using the MENU, UP, DOWN, and ENTER buttons, you will the following options to select and modify:

ADDR, CHND, STAT, COLO, AUTO, SOUD, REMO, REST, INFO, and selections are outlined below.



### ADDR - DMX Address Setting via control board and motor setting:

1. Tap the MENU button and UP button or DOWN button until "ADDR" is displayed, press ENTER.
2. "Axxx" will now be displayed, "x" represents the displayed address. Press the UP or DOWN buttons to find your desired address.

### CHND - This menu will let you select your desired DMX Channel mode.

1. Tap the MENU button and UP button or DOWN button until "CHND" is displayed, press ENTER.
2. "X Ch" will now be displayed, "X" represents the displayed DMX channel mode. Press the UP or DOWN buttons to find your desired Channel mode.



STAT - This menu will let you select your desired static color mode and strobe mode.

1. Tap the MENU button until "STAT" is displayed, press ENTER.
2. There will be six options. Press ENTER can select the option and press UP or DOWN button can select the value you desire as below.
  - 1) red~R000~R255
  - 2) gree~G000~G255
  - 3) blue~B000~B255
  - 4) white~W000~W255
  - 5) anbe~A000~A255
  - 6) strobe~ST00~ST20

COLO - Build-in color mix

1. Tap the MENU button and UP button or DOWN button until "COLO" is displayed, press ENTER.
2. "CoX" will now be displayed, "X" representing a number between 1 and 51 will be displayed. Press the UP or DOWN buttons to select either a static color mode.

AUTO - This menu will let you select your desired auto mode

1. Tap the MENU button and UP button or DOWN button until "AUTO" is displayed, press ENTER.
2. "Autx" will now be displayed, you can confirm three modes by UP or DOWN for auto mode.

SOUND - This menu will let you select your desired sound mode

1. Tap the MENU button until "SOUND" is displayed, press ENTER.
2. "SOUND No.x" or "SOUND SENS" will now be displayed, you can confirm three modes by UP or DOWN for sound mode. "SOUND SENS" will display the Sensitivity of sound.

REMO - This menu will let you select your desired remo mode

1. Tap the MENU button until "REMO" is displayed, press ENTER.
2. "on" or "off" will now be displayed, you can select to close or open the infrared

REST - This will display the System all value Reset

1. Press the UP or DOWN button until "REST" is displayed, press ENTER.
2. The software version will be displayed.

INFO - This menu will display the light information

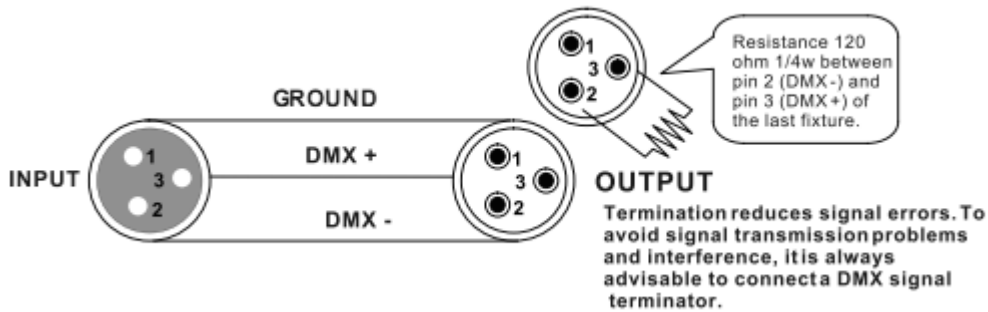
1. Tap the MENU button and UP button or DOWN button until "INFO" is displayed, press ENTER.
2. DISP this will display the time of display panel, if you select "ON" means after 20 seconds the display panel will turn off, if you select "OFF" means the display panel will always display.
3. TEMP this will display the temperature at work
4. TIME this will display the light operating time

SLAV - This menu will let you select your desired Master/slave mode

1. Tap the MENU button until "SLAV" is displayed, press ENTER.
2. "Sla" will now be displayed, Slave mode is confirmed. It will repeat the master unit in auto mode sound mode and chase mode.

## CABLE CONNECTORS

Cabling must have a male XLR connector on one end and a female XLR connector on the other end. Always use cables that are designed for DMX use. Never use microphone cables, operation can be unpredictable and you may damage your lights.



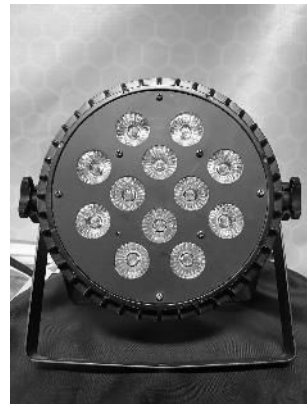
## 3-PIN TO 5-PIN CONVERSION CHART

Note! If you use a controller with a 5 pin DMX output connector, you need to use a 5 pin to 3 pin adapter. The chart below details a proper cable conversion:

*3-PIN TO 5-PIN CONVERSION CHART*

Conductor	3 Pin Female (output)	5 Pin Male (Input)
Ground/Shield	Pin 1	Pin 1
Data ( - ) signal	Pin 2	Pin 2
Data ( + ) signal	Pin 3	Pin 3
Do not use		Do not use
Do not use		Do not use

**CAUTION:** Do not allow contact between the ground and the fixture’s chassis ground. Removing the ground can cause a ground loop, and your fixture may perform erratically. Test cables with an ohmmeter to verify positive pole and to make sure the pins are not grounded or shorted to the shield or each other.



# INFRARED REMOTE CONTROL

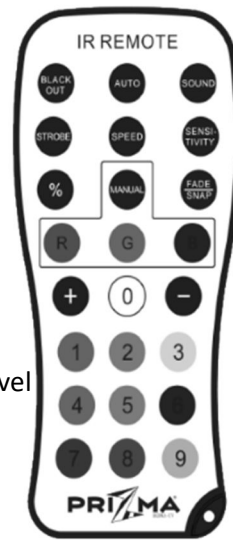


R,G,B,W,UV,Amber Color Setting

You can use these number buttons below to adjust numerals in any program mode

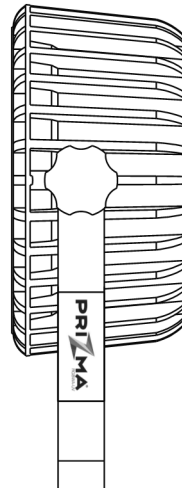
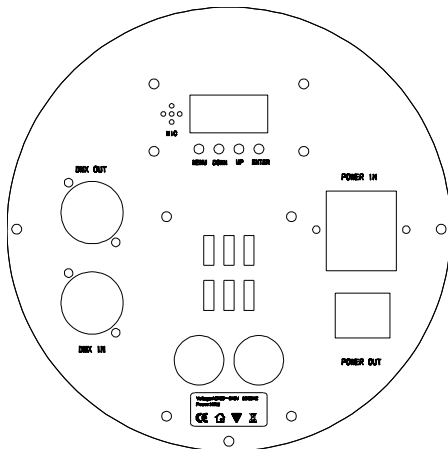


- AUTO : Run auto programs
- FADE : Fade auto programs
- SPEED : Enable speed adjustment of auto programs
- + / - : Increase / decrease speed of auto programs
- SOUND : Activate sound-active mode
- SENSITIVITY : Enable sound sensitivity adjustment
- + / - : Increase / decrease sound sensitivity
- MANUAL : Enable static color selection
- 0-9 : Select static colors
- R : Select red
- G : Select green
- B : Select blue
- A : Select amber
- W : Select white
- UV : Select UV
- + / - : Increase / decrease output of each color
- % : Enable adjustment of total light output level
- + / - : Increase / decrease total light output
- STROBE : Enable adjustment of strobe rate
- + / - : Increase / decrease strobe rate
- STROBE : Press again to turn off strobe
- BLACKOUT : Turn off all light output
- BLACKOUT : Press again to exit blackout mode



- BLACK OUT Light ON / OFF Button
- AUTO Automatic Mode Button
- SOUND Sound Mode Button
- STROBE Strobe Button
- SPEED Speed Adjust Button
- SENSITIVITY Sensitivity Adjust Button
- % Value Adjust Button
- MANUAL Manual Adjust Button
- FADE/SNAP Fade / Snap Button

Note: If remote is not responding, press BLACKOUT to confirm that blackout mode was not mistakenly activated



Find an authorized dealer near you at [www.proxdirect.com/dealer/locator](http://www.proxdirect.com/dealer/locator)

and ask about more innovative products from .....



**ProX<sup>®</sup>**

**Live Performance Gear**

[www.ProXDirect.com](http://www.ProXDirect.com)

901 Essex Street, Brooklyn, NY 11208  
Phone: 718.237.2299 Fax: 718.237.2318  
Email: [Info@ProXDirect.com](mailto:Info@ProXDirect.com)

***(NO DIRECT SALES, DEALERS AND DISTRIBUTORS ONLY)***

Please register your product warranty at  
[www.proxdirect.com/support/warranty](http://www.proxdirect.com/support/warranty)

You can submit your setup photos and your testimonials on our website. Tag us on your social media sites as #proxdirect