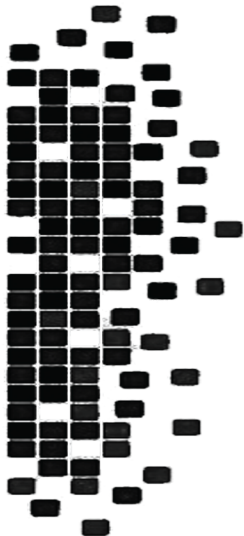
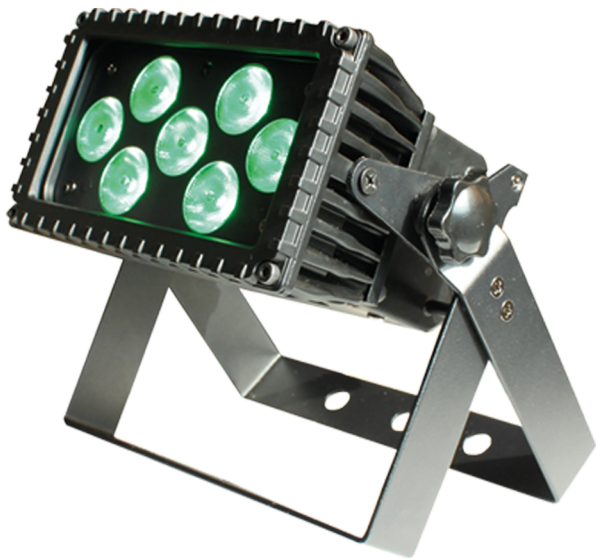


XSTATIC PRO LIGHTING

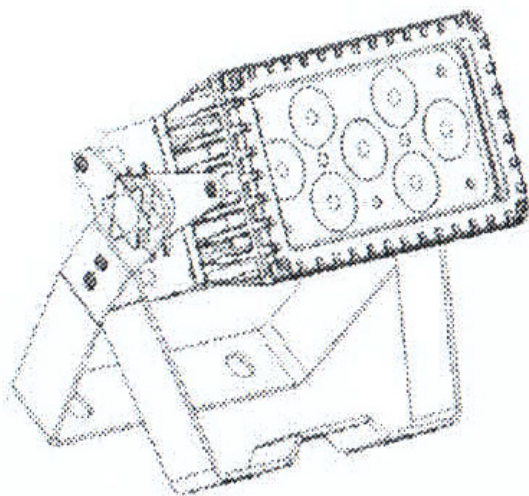
X-BARTRI7 IRC

7x Triple Color (RGB) LED Bar Lamp



USER MANUAL

High Power Indoor PAR, 7 *Tri-3W User Manual



SAFETY INSTRUCTIONS:

CAUTION! READ BEFORE USE!

For your own safety, please read this user manual carefully before you initially power up your fixture.

- Examine packaging to ensure all parts included
- Disconnect all power and other cables prior to servicing
- Always make sure to provide adequate ventilation
- Keep this device away from rain and moisture!

POWER



Be sure you have the proper power cables for the fixture. A 120v cable with a Standard PC Power connector is required, and included with the unit.

There is also a power Output plug available for daisy chaining located next to the power switch.

CONNECTIONS

Remote control and linking is available via four operation modes: DMX 512 Control, Auto and Master/Slave, and Sound Active modes to form different led effects, and DMX-512 connection to connection between fixtures.



(Input and Output Ports seen here. See the DMX page for cabling details and Daisy-chaining specifics on Page 10).

FEATURES:

- RGB Color Mixing
- Color Strobe Effect
- Color Mix Effect
- LED Chases (Adjustable Speeds)
- Electronic Dimming 0-100%
- Operating Modes: Sound Active, Master / Slave, or DMX Control
- DMX-512 Protocol Compatible (3, 6 & 7 DMX Channels)
- Digital Display for Address and Function Settings
- IR Remote Control

Please Note: Specifications and improvements in the design of this unit and this manual are subject to change without any prior written notice.

TECHNICAL SPECIFICATIONS:

- Voltage: 100V~240V,50Hz~60Hz
- LEDs: 7 x 3W RGB LEDs
- Power Consumption: 21W
- Weight: 1.3Kgs.
- Dimensions: 197 x 90 x 198mm
- Colors: RGB Color Mixing
- DMX In and Out
- Chainable power ports, 20pcs @ 110v, 38pcs @ 240v
- LCD Control Screen
- Beam Angle: 28 degrees

DMX Control and Chain Connections:

You can connect the DMX-output of a controller directly to the DMX-input of the fixture. If connecting multiple units, be sure to use the proper cabling.

TERMINATION NOTE: These units are not self terminating. If the last fixture in the DMX chain will need to be terminated with a Terminator. (page 9)

MENU / CONTROLS:

SETUP MENU: You can easily setup and control your TRI-7 RGB LED Bar Lamp from the on-board LCD screen. Using the MENU, SETUP, UP and DOWN, buttons, you will find the following options to select and modify:



The Control Screen with MENU, SETUP, UP, and DOWN, and ENTER Navigation buttons.

LED DISPLAY OPERATION - These instructions will provide access to the setup and control of the DMX light.

1. AUTO MODE

Press the MODE button until AUTO displays on the Menu screen. The fixture comes with six built-in programs titled PR.02 - PR.07, where the user can set the operation speed and strobe speed. The presets will run in loop until stopped.

2. BUILT-IN PROGRAM SELECTION

You can access several levels of programs and different styles by setting the program number, then pressing SETUP button to select programming options.

Built-in programs	Description
Pr.01	Select the static colors
Pr.02	Seven color gradual change
Pr.03	Three color gradual change
Pr.04	dreams
Pr.05	Seven color hopping change
Pr.06	Three color hopping change
Pr.07	Various hopping change

CHOOSING PROGRAMS:

To select a Static Color, press the MODE button until you see PR.01. Then use UP or DOWN buttons to choose between colors. They are listed as:

MENU OPTIONS CONT'D:

LED display	Color
0-r9b	White
1--r	Red
2-r9	Orange
3-u9	Light yellow
4--9	Green
5-9b	Cyan
6--b	Blue
7-rb	Purple
8-ru	Pink
9-r9	Yellow
10.CU	Cool white
11.UU	Warm white

To access the pre-saved programs, press the MODE button until you see PR.01. Then use UP or DOWN buttons to choose between programs.

Select PR.02 - PR.07 and then press SETUP. The UP and DOWN buttons now navigate within these Program's choices and settings. You can now scroll through the following options: Now press SETUP and you will now see F500 in the display field indicating the program speed. Press UP or DOWN to select a setting from F500 to F599.

For setting the Operation Speed you can scroll through SP.01 to the highest speed at SP.FL (1-100). Press SETUP again to control the Strobe Speed as before from F500 to F599.

3. DIMMING MODE

Press the MODE button until CLR displays on the Menu screen. Then repeatedly pressing the SETUP button will scroll through 4 selections, RED (R), GREEN (G), BLUE (B), and STROBE (SP). Each of the R, G, and B selections have 0-255 levels of dimmer, and the Strobe has speed settings from 0-99.

Optional	Operation instruction
r.255	R LED dimming, through UP or DOWN adjust the brightness value (0—255) of R LED
g.255	G LED dimming, through UP or DOWN adjust the brightness value(0--255) of G LED
b.255	B LED dimming , through UP or DOWN adjust the brightness value(0--255) of B LED
SP.01	Set to strobe mode, through UP or DOWN set the strobe frequency (0—99)

MENU OPTION CONT'D:

4. SOUND MODE - This menu will let you select your desired Sound Mode Setting.

Press the MODE button until SOUND displays on the Menu screen. The menu will display the parameters SOUND - SOUND I, where the user can set the level of Sound sensitivity the fixture.

5. DMX MODE

This menu will let you select the DMX mode.

For Manual selection, press the MODE button until d.00 I displays on the Menu screen.

The DMX Channel can be selected by pressing the UP and DOWN buttons and selecting d.00 I - d.5 I2.

More Channels can be used by pressing the SETUP button and selecting either 3-ch, 6-ch, or 7-ch.

Note that this fixture has DMX Auto Detection, so regardless of any other Mode setting, if there is DMX signal present, it will automatically turn on it's DMX Mode. When DMX is no longer present, the fixture returns to previous Mode setting (infrared remote control also disabled when in DMX Mode).

6. MASTER/SLAVE MODE

Press the MODE button until SLAVE displays on the Menu screen. The fixture will be slaved to which ever lead device is being controlled.

7. RESTORE FACTORY SETTINGS

When fixture is off, press the MODE and SETUP buttons at the same time and hold while turning the fixture power on. Hold the buttons until r5Et displays and flashes on the Menu screen.

DMX SETUP

DMX mode 1: 3-CH

Sheet 6 DMX mode function sheet of 3CH

CHANNELS	VALUE	FUNCTION
1	0-255	R 0-100%
2	0-255	G 0-100%
3	0-255	B 0-100%

DMX mode 2: 5-CH

Sheet 7 DMX mode function sheet of 5CH

CHANNELS	VALUE	FUNCTIONS
1	0-255	Master dimmer
2	0-255	R 0-100%
3	0-255	G 0-100%
4	0-255	B 0-100%
5	0-10	No use
	11-255	Sound active
6	0-9	No use
	11-255	strobe(color strobe selected by 1CH-4CH),the big value,the higher strobe frequency
	0-255	Sound active sensitivity

DMX mode 3: 7-CH

Sheet 8 DMX mode function sheet of 7CH

CHANNELS	VALUE	FUNCTIONS
1	0-255	master dimmer
2	0-255	R 0-100%
3	0-255	G 0-100%
4	0-255	B 0-100%
5	0-24	strobe(the color selected by 1CH-4CH strobe)
	25-49	built-in programs auto running
	50-74	built-in programs 2
	75-99	built-in programs 3
	100-124	built-in programs 4
	125-149	built-in programs 5
	150-174	built-in programs 6
	175-199	built-in programs 7
	200-255	sound active mode
6	0-255	the bigger built-in programs running speed,the faster sound active sensitivity speed
7	0-255	the bigger strobe frequency value, the higher frequency

DMX SETUP CONT'D:

DMX-512 connection between fixtures

The fixture is equipped with 2-pin XLR sockets for DMX input and output. The sockets are wired in parallel. Only use a shielded twisted-pair cable designed for 3-pin XLR-plugs and connectors in order to connect the controller with the fixture or one fixture with another.

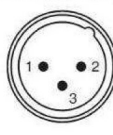
Occupation of the XLR-connection

DMX - output
XLR mounting-sockets (rear view):



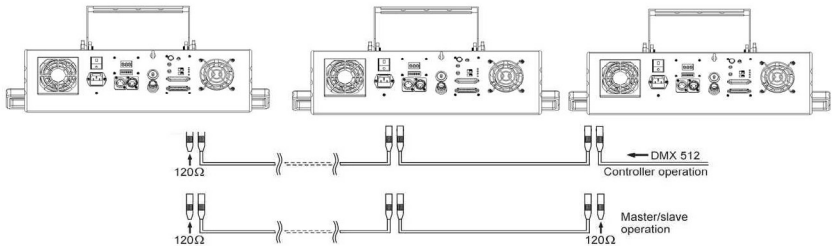
- 1 - Shield
- 2 - Signal (-)
- 3 - Signal (+)

DMX-input
XLR mounting-plugs (rear view):



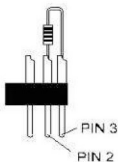
Building a serial DMX-chain

Assembling a DMX Chain is as simple as connecting two more more fixtures with DMX In/Outs with the proper DMX specific 3-pin XLR-style cables.



NOTE: The last or final fixture in the DMX chain MUST have a terminator plug. A terminator is an XLR type plug that does not connect to a cable.

MAKE A TERMINATOR:



[To make Terminator; solder a 120 resistor between Signal (-) and Signal (+) into a 3-pin XLR-plug and plug it in the DMX-output of the last fixture.]

INFRARED REMOTE FUNCTIONS:

LED Function Mode	IR Remote Function	Function Instruction
	BLACKOUT	Turn off the LED (DMX mode, the slave mode decided by the host), then press it once to recovery.
Auto running	AUTO	Auto running mode (built-in programs 2-7)
Built-in programs	MANUAL & button+ (-)	Select the built-in programs mode (press the MANUAL (LED point: yellow LED flicker), and then press + (-), select the built-in programs), details please see sheet4.
	SPEED & button+ (-)	The built-in programs mode (other pattern is invalid), set up internal process speed. Press the SPEED, (LED point out: green LED flicker), then press the "+", the speed increased, press the "-", the speed reduced.
	STROBE & button+ (-)	In built-in programs mode, press the STROBE, dynamic strobe, press it again to restore. In strobe state, press the "+", the strobe frequency increased; press the "-", the frequency reduced.
Static color (built-in programs1)	Numeric button (0-9)	press the numeric key 0-9 to select the ten corresponding difference colors, the details please see sheet3
	STROBE & button+ (-)	When in static monochrome color, press the STROBE, the monochrome color strobe, press it again to restore. When in strobe state, press the "+", the strobe frequency increased; press the "-", the strobe frequency reduced.
Dimming Mode	R & button+ (-)	Press the R, select the red LED dimming, press the "+", will increase the brightness; press the "-", will reduce the brightness, when brightness achieve maximum or minimum, press the + (-) again, the red LED will flashing (if the LED in strobe state, first the user must press the "STROBE" to cancel the strobe and then adjust the brightness through "+" or "-").
	G & button+ (-)	Press the G, select the green LED dimming, press the "+", the brightness increase, press the "-", the brightness reduce, when the brightness achieve maximum or minimum, press + (-) again, the green LED will flashing (if the LED in strobe state, first the user must press the "STROBE" to cancel the strobe and then adjust the brightness through "+" or "-").
	B & button+ (-)	Press the B, select the blue LED dimming, press the "+", the brightness increase, press the "-", the brightness reduce, when the brightness achieve maximum or minimum, press + (-) again, the blue LED will flashing (if the LED in strobe state, first the user must press the "STROBE" to cancel the strobe and then adjust the brightness through "+" or "-").
	STROBE & button+ (-)	In dimming mode, press the STROBE, the preset color will strobe, press it again to restore. In strobe state, press the "+", the strobe frequency increased, press the "-", the frequency reduced.
Sound-active mode	SOUND(or SENSITIVITY)	Select the DMX mode
	button+ (-)	In sound active mode, press the "+", the sound active sensitivity will increase, press the "-", the sound active sensitivity will reduce
Restore factory settings	BLACKOUT & 9 & 8 & 7	Press the BLACKOUT, make sure the lamp was in OFF state, press the numeric button 9, 8, 7(each time press the keys the LED will flash for tips), can restore factory settings.

Find your dealer on our website to ask about more innovative products from...



XSTATIC
PRO LIGHTING

ProX
Live Performance Gear

901 Essex Street, Brooklyn, NY 11208
Tel: (718) 237-2299, Fax: (718) 237-2318
Email: info@xstaticusa.com

(NO DIRECT SALES, DEALERS AND DISTRIBUTORS ONLY)

Please Register your product warranty on ProXDirect.com,
submit your testimonials and setup photos to our website,
& Tag us on your social media websites.

[#proxdirect](https://twitter.com/proxdirect)